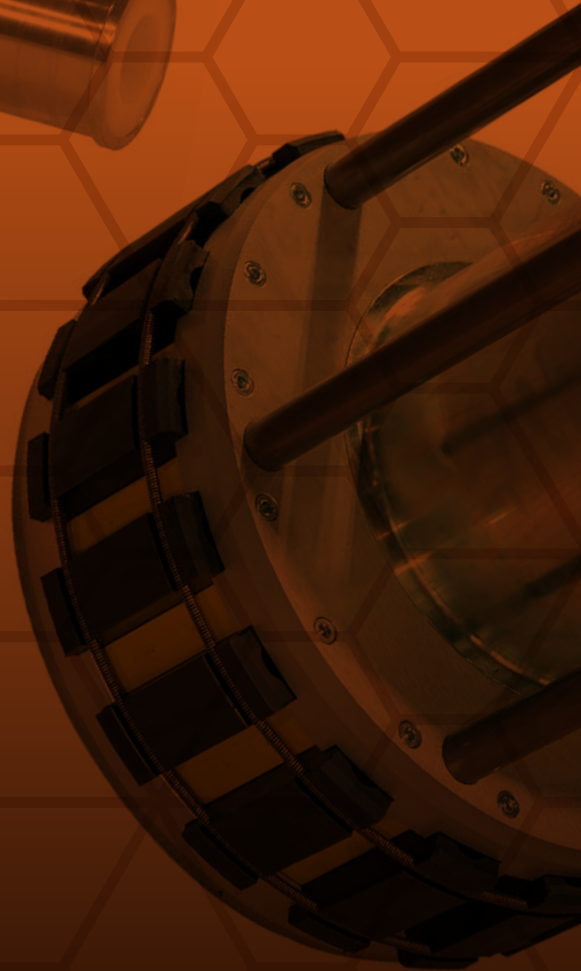
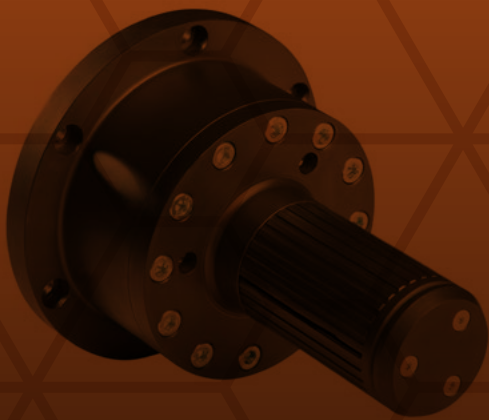


EXPANDING CHUCKS



CONSTANTLY EXPANDING.

It is our history, since 1954.

It is the history of those who have always looked ahead with determination and courage, to create what is today one of the most important companies, worldwide, in the design and construction of expansion devices (shafts and chucks), safety chucks, handling systems (extractors, trolleys, lifting platforms) and rollers.

Vision

Winding and unwinding perfect reels with maximum efficiency.

Mission

Create user friendly, innovative and highly customizable winding and unwinding systems.

Values

Honesty and integrity
Constant work for customer satisfaction
Respect and recognition for people's value

CARBON FIBER NON-EXPANDING CHUCKS MOD. 700/NEC [PAG 06](#)

MECHANICAL SELF-EXPANDING CHUCKS WITH LEAVES MOD. 711/MA [PAG 08](#)

MECHANICAL SELF-EXPANDING CHUCKS NARROW STYLE WITH SECTORS MOD. 713/MA [PAG 10](#)

MECHANICAL AXIAL EXPANDING CHUCKS WITH LUGS MOD. 714/AD [PAG 12](#)

PNEUMECANICAL EXPANDING CHUCKS WITH LEAVES MOD. 714/MZ [PAG 14](#)

PNEUMECANICAL EXPANDING CHUCKS WITH LEAVES AND ADAPTOR MOD. 714/MZ-A [PAG 16](#)

PNEUMECANICAL EXPANDING CHUCKS WITH LUGS MOD. 714/MZ-C [PAG 18](#)

PNEUMECANICAL CHUCKS WITH LEAVES MOD. 714/MZ-L [PAG 20](#)

PNEUMATIC EXPANDING TIRE CHUCKS MOD. 715/PG [PAG 22](#)

PNEUMATIC EXPANDING CHUCKS WITH LUGS MOD. 716/PK [PAG 24](#)

REEL LIFTING EXPANDING CHUCKS WITH LEAVES MOD. 718/PH [PAG 26](#)

PNEUMATIC EXPANDING CHUCKS REEL SAVER MOD.720/PH [PAG 28](#)

PNEUMATIC EXPANDING CHUCKS WITH LEDGES MOD.740/PL [PAG 30](#)

CARBON FIBER NON-EXPANDING CHUCKS

MOD. 700/NEC



ultra
lightweight



greater resistance



easy maintenance



chosen from time to time
based on the application;
60 years of experience



Safe



high speed



12-month warranty
ensures the quality
of the product



The chuck is designed with aluminium profile, steel and carbon fiber and is used for the reel unwinding (Paper, Tissue, Nonwoven) with tangential belts.

Its extremely ergonomic and lightweight design allows a better manual handling according to current law, avoiding having to use lifting systems for the chuck's insertion in the reel and the extraction from the reel.

The steel sleeve covering protects the carbon from the crane lifting hooks.

The chuck is without welds, or rivets, and features replaceable poly inserts.

The mounting flange is always custom-made.



FEATURES MOD. 700/NEC

- Low maintenance
- Robustness
- Does not require air
- Quality components
- Easy to handle
- Replaceable cone
- Lightweight

DATA SHEET*		700/NEC
DIAMETER		≥ 3" ≤ 20"
ROBUSTNESS		≥ 10 kg ≤ 25 kg
DOES NOT REQUIRE AIR		≥ 1.000 kg ≤ 5.000 kg
QUALITY COMPONENTS		Materials: carbon fiber, aluminium alloy, steel and plastic materials

* The technical data are purely indicative. Contact Svecom - P.E. for personalized requests

MECHANICAL SELF-EXPANDING CHUCKS WITH LEAVES

MOD. 711/MA



drastically reduces machine downtime due to repairs of rubber tube, seals, valves, etc.



high payload capacity



chosen from time to time based on the application; 60 years of experience



lower installation costs



12-month warranty ensures the quality of the product



The Model 711/MA is recommended primarily for unwinding of both steel and cardboard cores.

It is superior for higher weight, speed and grants a perfect core centering.

The body of the chuck and the expanders (leaves) are available in steel only. The flange mounting is always custom made and the chuck can be stepped for use with different core sizes.

The expanding elements, pin-fitted on a cam, are expanded through the reel rotation combined with the web tension.

We can supply chucks with two or three expansion diameters for different cores.



FEATURES MOD. 711/MA

- Low maintenance
- Robustness
- Does not require air
- Quality components

DATA SHEET*		711/MA			
CORE DIAMETER	from 70 up to 600 mm				
CHUCK LENGTH	170 mm				
EXPANSION RANGE	5 mm on diameter				
INTERNAL CORE DIAMETER IN MM	70/76	100	120	150	
NUMBER OF LEAFS ON CIRCUMFERENCE	4	4	4	4	
MAX CARRYING CAPACITY PER CHUCK IN N	16000	21000	27000	35000	

* The technical data are purely indicative. Contact Svecom - P.E. for personalized requests

MECHANICAL SELF-EXPANDING CHUCKS NARROW STYLE WITH SECTORS

MOD. 713/MA



drastically reduces machine
downtime due to repairs of
rubber tube, seals, valves, etc.



high payload
capacity



chosen from time to time
based on the application;
60 years of experience



lower installation
costs



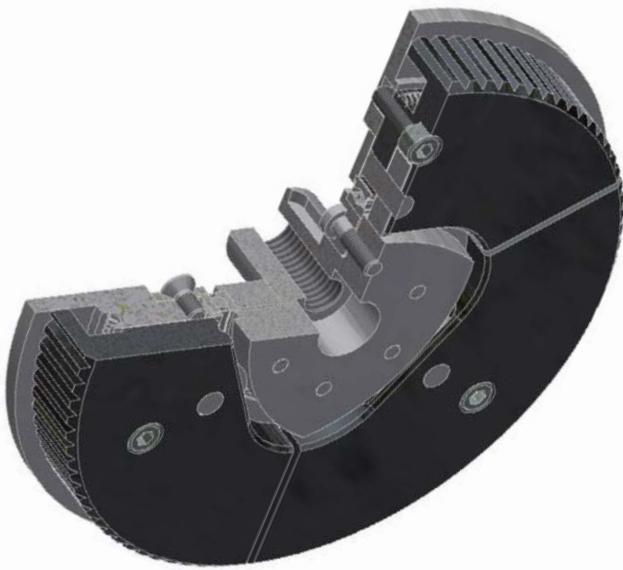
12-month warranty
ensures the quality
of the product



Auto expanding Mechanical Chuck with sectors: this chuck is indicated for winding and unwinding of cores in steel or carton.

Since the chuck uses thinner sectors and not leaves, the chuck may be thinner thus allowing to be suitable where space is reduced.

The expanding components, assembled with a concentric piece (cam), are brought to expansion by the rotating movement of the reel and adapting to the tension of the material.



FEATURES MOD. 713/MA

- Low maintenance
- Robustness
- Quality components

DATA SHEET*		713/MA
CORE DIAMETER	from 70 up to 600 mm	
CHUCK LENGTH	from 15 up to 50 mm	
EXPANSION RANGE	5 mm on diameter	

* The technical data are purely indicative. Contact Svecom - P.E. for personalized requests

MECHANICAL AXIAL EXPANDING CHUCKS WITH LUGS

MOD. 714/AD



reduced vibrations on
the machine; high quality
reels



eliminates the need of a
chuck for each core
diameter; reduced format
change time



allows to work with large size
and considerable weight reels,
at high speeds



lower installation
costs



chosen from time to time
based on the application;
60 years of experience



12-month warranty
ensures the quality
of the product



The Model 714/AD is recommended for unwinding and winding where perfect core centering is needed.

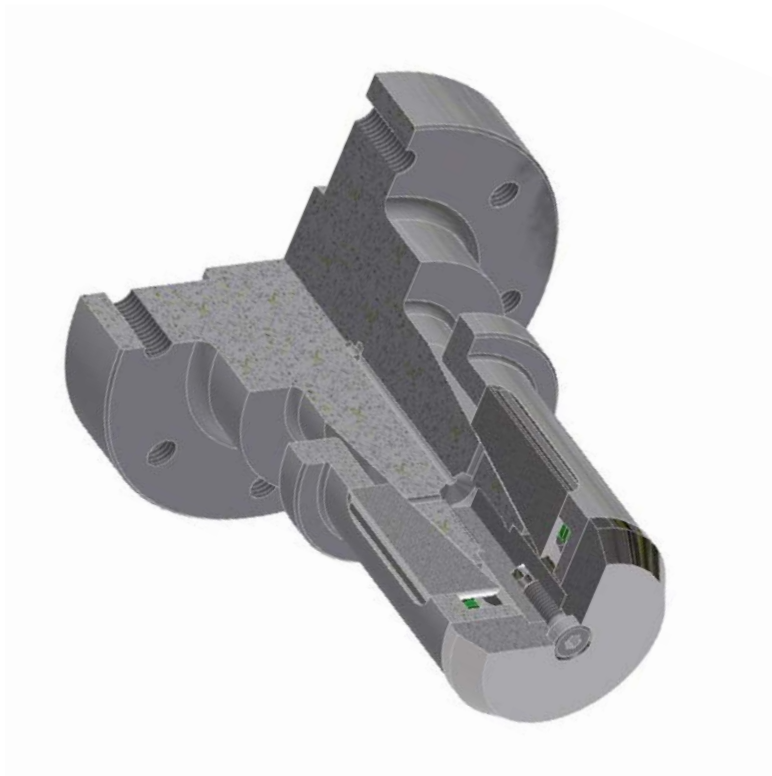
It is superior for higher weight, speed, and torque requirements. The body of the chuck comes in steel and the expanders (leaves or lugs, depending on the application) are available in steel or rubber covered.

The mounting flange is always custom made. Expansion is accomplished by the machine movable arms that mechanically engage the expanders. Return springs allow the complete lugs or leaves retraction when machine arms are opened.

When running different core diameters, suitable interchangeable adaptors can be fitted onto one base chuck.

FEATURES MOD. 714/AD

- Excellent centering
- Possibility of mounting adapters
- High performance
- Does not require air
- Quality components



DATA SHEET*		714/AD			
CORE DIAMETER	from 70 up to 600 mm				
CHUCK LENGTH	from 210 mm				
EXPANSION RANGE	10/12 on diameter				
INTERNAL CORE DIAMETER IN MM	70/76	100	120	150	
NUMBER OF LEAFS ON CIRCUMFERENCE	3	4	5	6	
MAX CARRYING CAPACITY PER CHUCK IN N	12000	15000	20000	25000	

* The technical data are purely indicative. Contact Svecom - P.E. for personalized requests

PNEUMECHEMICAL EXPANDING CHUCKS WITH LEAVES

MOD. 714/MZ



reduced vibrations on the machine; high quality reels



eliminates the need of a chuck for each core diameter; reduced format change time



allows to work with large size and considerable weight reels, at high speeds



chosen from time to time based on the application; 60 years of experience



12-month warranty ensures the quality of the product



The Model 714/MZ is recommended for both winding and unwinding, where perfect centering is needed.

It can also be used for winding and rewinding, and is superior for higher weight, speed, and torque requirements. The body of the chuck and the expanders (lugs or leaves, depending from the application) are available in steel only. The chuck is available in flange or shaft extension type mountings.

Expansion is accomplished by one (or more) air activated pistons that mechanically engage the expanders. Expansion can be spring activated to grant core is gripped also in case of air leakage in the machine.

When running different core diameters, suitable interchangeable adaptors can be fitted onto one base chuck.

With usage of steel cores, rubber-covered leaves are provided.

FEATURES MOD. 714/MZ

- Excellent centering
- Possibility of mounting adapters
- High performance
- Quality components



DATA SHEET*		714/MZ			
CORE DIAMETER	from 70 up to 600 mm				
CHUCK LENGTH	from 210 mm				
EXPANSION RANGE	10/12 on diameter				
WORKING PRESSURE	min. 5 bar (7 bar recommended)				
INTERNAL CORE DIAMETER IN MM	70/76	100	120	150	
NUMBER OF LEAFS ON CIRCUMFERENCE	3	3	4	6	
MAX CARRYING CAPACITY PER CHUCK IN N	12000	14000	20000	23000	

* The technical data are purely indicative. Contact Svecom - P.E. for personalized requests

PNEUMECHEMICAL EXPANDING CHUCKS WITH LEAVES AND ADAPTOR

MOD. 714/MZ-A



reduced vibrations on
the machine; high quality
reels



allows to work with large size
and considerable weight reels,
at high speeds



locking guaranteed even in
difficult working conditions



chosen from time to time
based on the application;
60 years of experience



12-month warranty
ensures the quality
of the product



The Model 714/MZ-A is recommended for unwinding and rewinding where perfect core centering is needed.

It is superior for higher weight, speed, and torque requirements, especially with steel cores.

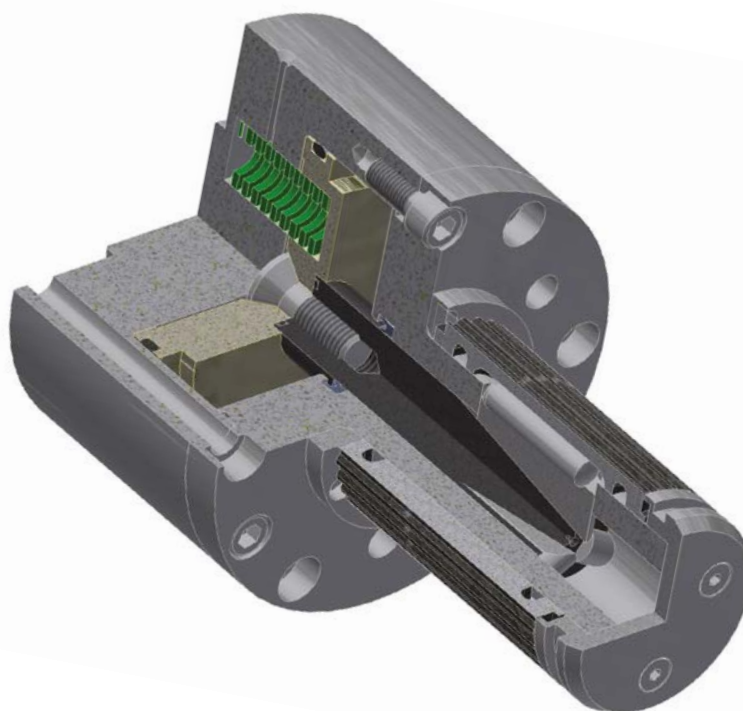
The body of the chuck and the expanders (leaves) are available in steel only.

The chuck is available in flange or shaft extension type mounting, always custom-made.

Expansion is accomplished by one (or more) air

activated pistons that mechanically engage the expanders.

Expansion can be spring activated to grant core is gripped also in case of air leakage in the machine. The exclusive SVECOM self-expanding system (activated through the web tension), combined with the pneumatic-mechanical system, causes a further expansion of the leaves and ensures a perfect core gripping also in case of heavy-duty applications, such as very quick emergency stop.



FEATURES MOD. 714/MZ-A

- Excellent centering
- High performance
- Total safety
- Quality components

DATA SHEET*		714/MZ-A			
CORE DIAMETER	from 70 up to 600 mm				
CHUCK LENGTH	from 210 mm				
EXPANSION RANGE	18/10 on diameter				
WORKING PRESSURE	min. 5 bar (6 bar recommended)				
INTERNAL CORE DIAMETER IN MM	70/76	100	120	150	
NUMBER OF LEAFS ON CIRCUMFERENCE	3	3	4	6	
MAX CARRYING CAPACITY PER CHUCK IN N	12000	14000	20000	23000	

* The technical data are purely indicative. Contact Svecom - P.E. for personalized requests

PNEUMATIC EXPANDING CHUCKS WITH LUGS

MOD. 714/MZ-C



reduced vibrations on
the machine; high quality
reels



eliminates the need of a
chuck for each core
diameter; reduced format
change time



allows to work with large size
and considerable weight reels,
at high speeds



chosen from time to time
based on the application;
60 years of experience



12-month warranty
ensures the quality
of the product



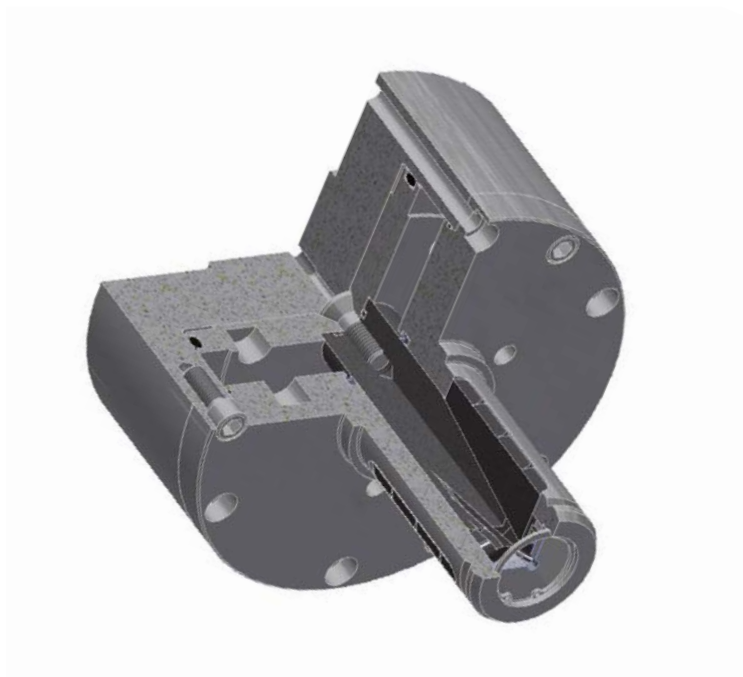
The Model 714/MZ-C is recommended for both winding and unwinding, where perfect centering is needed.

It is superior for higher weight, speed, and torque requirements.

The body of the chuck and the expanders (lugs) are available in steel only.

The chuck is available in flange or shaft extension type mountings.

Expansion is accomplished by one (or more) air activated pistons that mechanically engage the expanders. Expansion can be spring activated to grant core is gripped also in case of air leakage in the machine. When running different core diameters, suitable interchangeable adaptors can be fitted onto one base chuck.



FEATURES MOD. 714/MZ-C

- Low maintenance
- Robustness
- Quality components

DATA SHEET*		714/MZ-C
INTERNAL CORE DIAMETER IN MM	70 - 76 - 120 - 150	
NUMBER OF LEAFS ON CIRCUMFERENCE	3 - 3 - 5 - 6	
MAX CARRYING CAPACITY PER CHUCK IN N	15000 - 18000 - 25000 - 30000	

* The technical data are purely indicative. Contact Svecom - P.E. for personalized requests

PNEUMECHEMICAL CHUCKS WITH LEAVES

MOD. 714/MZ-L



reduced vibrations on
the machine; high quality
reels



eliminates the need of a
chuck for each core
diameter; reduced format
change time



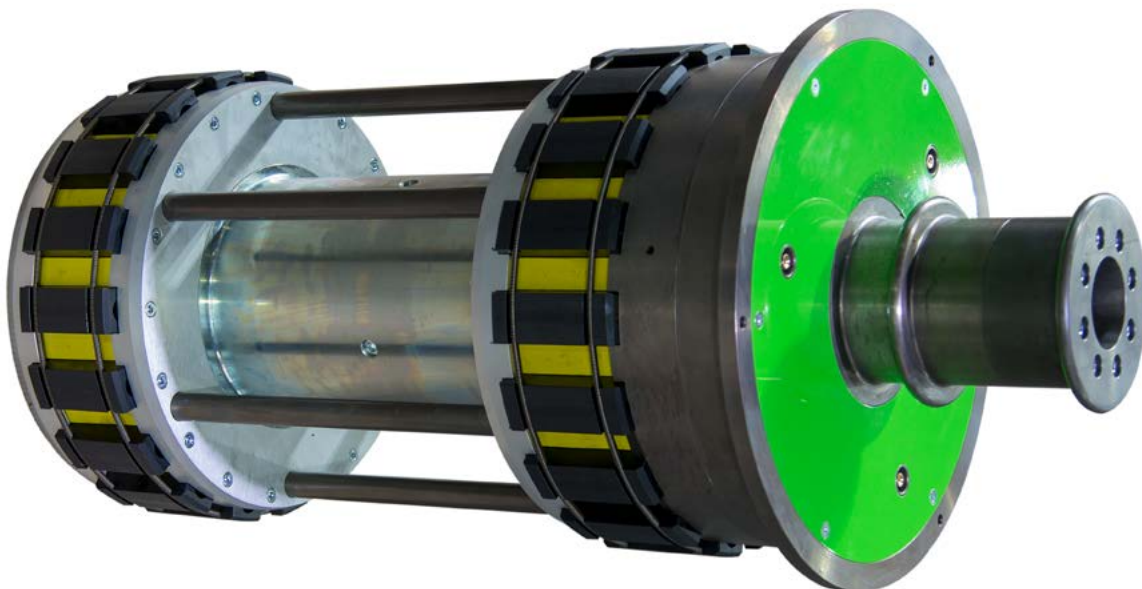
allows to work with large size
and considerable weight reels,
at high speeds



chosen from time to time
based on the application;
60 years of experience



12-month warranty
ensures the quality
of the product



The pneumatic chuck Model 714/MZL, expandible up to 20mm/Ø, is an innovative system is used for the reel unwinding (Paper or Tissue) with tangential belts.

This chuck allows to:

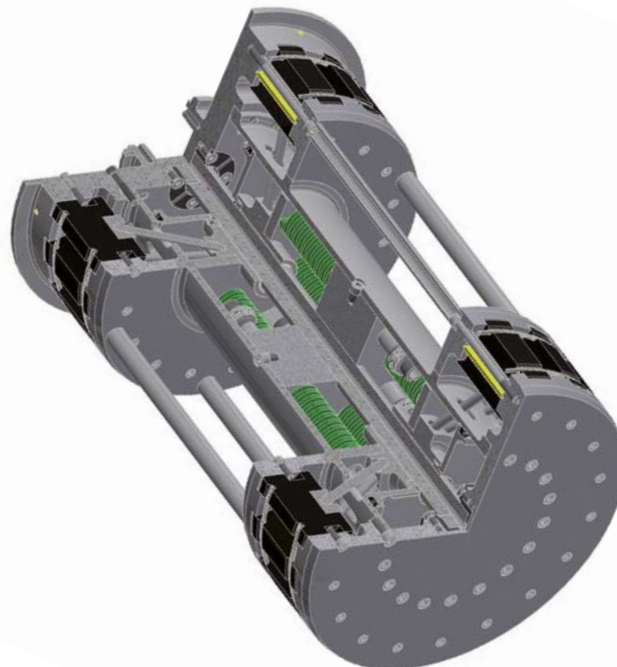
- increase safety for the operator;
- improve the efficiency of unwinding and reel changeover operations;
- extend core's life minimizing the possibility of damage;
- unwind damaged or distorted cores.

The locking system is mechanically activated by a set of springs which axially load a piston that in turn activates the levers to expand the plastic expanders.

To close the chuck, air must be fed in the valve (at a pressure of 4 to 6 bars) to retract the plastic expanders. The cores are aligned by means of a double mechanical expansion leverage system.

The chuck can be equipped with female cone or bearing housing for diameters from 200 mm to 600 mm.

The chuck can be equipped with a handling trolley.



FEATURES MOD. 714/MZ-L

- Low maintenance
- Robustness
- Quality components

DATA SHEET*		714/MZ-L			
DIAMETER	≥ 8" ≤ 20"				
REEL'S WEIGHT	≥ 1.000 kg ≤ 5.000 kg				
MATERIALS	ALUMINIUM				
SUPPLIES WITH ATTACHMENTS FOR ALL TYPES OF UNWINDERS	replaceable female cone, support group, external pivot				
INTERNAL CORE DIAMETER IN MM	200	300	400	450	
MAX CARRYING IN N (STEEL SUPPORT)	12000	17500	31700	25,5	
CHUCK WEIGHT (PIVOT EXCLUDED) IN N/CM LINEAR	2.28	2.70	3.90	18,6	

* The technical data are purely indicative. Contact Svecom - P.E. for personalized requests

PNEUMATIC EXPANDING TIRE CHUCKS

MOD. 715/PG



designed to minimize
the risk of rupture



easily repairable;
requires low maintenance



handiness - reduced
format change time



chosen from time to time
based on the application;
60 years of experience



12-month warranty
ensures the quality
of the product



The 715/PG air chuck is recommended for unwinding and rewinding with cores.

The body of the chuck can be either light alloy or steel, whereas the expanding section is made of a high-resistance rubber band. It is available with side flange for mobile arms unwind stand mounting, or with a passing bore for passing bars mounting.

The steel clamp grants a perfect gripping onto

the bar and can be replaced with fixing grains to reduce the weight.

To get better performances in load capacity and transmissible torque, two or more 715/PG chucks can be connected in series and fed by one inflation air valve.

Expansion is accomplished by one only rubber band which once inflated exerts a direct pressure onto the core. It is mandatory to inflate the chuck only when the reel is inserted.



FEATURES MOD. 715/PG

- Simple construction
- High resistance rubber sleeves
- Lightness
- Quality components

DATA SHEET*		715/PG			
CORE DIAMETER	from 70 to 400 mm				
CHUCK LENGTH	about 90 mm				
EXPANSION	12 mm on diameter				
WORKING PRESSURE	min. 5 bar (6 bar recommended)				
INTERNAL CORE DIAMETER IN MM	70/76	100	120	150	200
MAX TORQUE WITH CARDBOARD CORES IN NM	90	280	470	620	1420
MAX TORQUE WITH STEEL CORES IN NM	140	340	530	760	1560
MAX CARRYING CAPACITY PER CHUCK IN N	2000	3000	4000	6500	8000

* The technical data are purely indicative. Contact Svecom - P.E. for personalized requests

PNEUMATIC EXPANDING CHUCKS WITH LUGS

MOD. 716/PK



designed to minimize
the risk of rupture



easily repairable;
requires low maintenance



chosen from time to time
based on the application;
60 years of experience



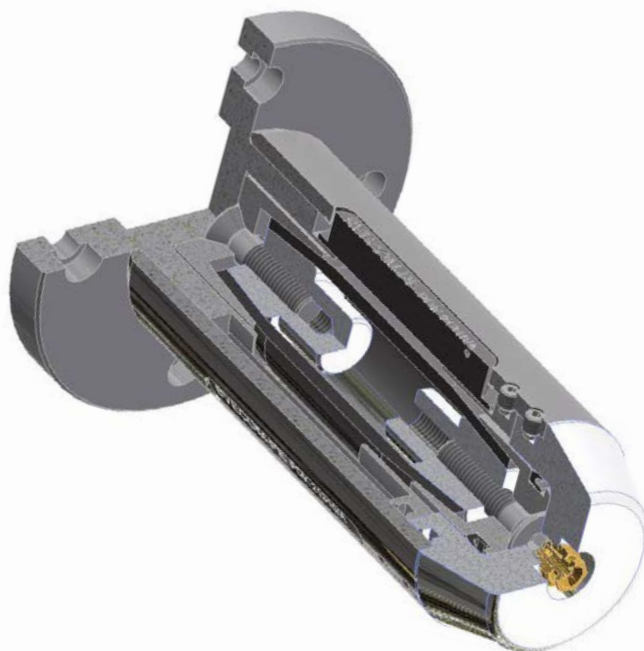
12-month warranty
ensures the quality
of the product



The 716/PK air chuck is recommended for unwinding and rewinding with cores.

The body of the chuck is normally made on steel and the expanders (lugs) come in either hardened steel, aluminium or rubber covered depending upon core material and torque requirements.

It is available with side flange for mobile arms unwind stand mounting, or with a passing bore for passing bars mounting. It can be stepped for use with different core sizes. Expansion is accomplished by one rubber tyre that exerts pressure to engage the expanders when air is applied.



FEATURES MOD. 716/PK

- Simple construction
- High resistance rubber sleeves
- Quality components

DATA SHEET*		716/PK			
CORE DIAMETER	from 70 to 300 mm				
CHUCK LENGTH	about 50 mm				
EXPANSION	8/10 mm on diameter				
WORKING PRESSURE	min. 5 bar (6 bar recommended)				
INTERNAL CORE DIAMETER IN MM	70/76	100	120	150	
NUMBER OF LUGS/LEAFS ON CIRCUMFERENCE	6	8	12	15	
MAX TORQUE WITH STEEL CORES IN NM	90	140	250	370	

* The technical data are purely indicative. Contact Svecom - P.E. for personalized requests

REEL LIFTING EXPANDING CHUCKS WITH LEAVES

MOD. 718/PH



locking guaranteed even in
difficult working conditions



high payload
capacity



chosen from time to time
based on the application;
60 years of experience



lower installation
costs



12-month warranty
ensures the quality
of the product



The Model 718/PH is recommended primary for lifting and vertical handling of reels.

It is superior for higher weights and grants a safe core gripping during lifting and transport operations.

The chuck body and the expanders (lugs or leaves, depending from the application) are available in steel only. The chuck is available in flange, crane hook or shaft extension type mountings, always custom made.

Expansion is accomplished by one or more springs that mechanically engage the expanders;

chuck retraction is obtained pneumatically. The chuck can be stepped for use with different core sizes. There are several types of applications for handling reels in total safety:

- ANTROPOMORPHIC ROBOT (chucks can easily to be attached to robotic arms to handle reels of any diameter);
- CRANE (it is possible to use chucks for lifting and vertical transport of reels);
- SLITTER REWINDER (reels are removed from the machine (slitter) and inserted on the chuck);
- REELS TURNER MOD. 410 BMS (the trolley is used for lifting and handling reels of wound material).



FEATURES MOD. 718/PH

- Robustness
- Total safety
- Quality components

DATA SHEET*		718/PH			
DIAMETER	from 70 to 300 mm				
CHUCK LENGTH	about 400 mm				
EXPANSION	12 mm on diameter				
WORKING PRESSURE	min. 5 bar (6 bar recommended)				
INTERNAL CORE DIAMETER IN MM	70/76	100	120	150	
NUMBER OF LUGS ON CIRCUMFERENCE	3	3	4	6	
MAX CARRYING CAPACITY PER CHUCK IN N	6000	7000	8000	10000	

* The technical data are purely indicative. Contact Svecom - P.E. for personalized requests

REEL SAVER PNEUMATIC CHUCK

MOD. 720/PH



designed to repair
damage cores



Safe



chosen from time to time
based on the application;
60 years of experience



12-month warranty
ensures the quality
of the product

The quick and inexpensive way to restore crushed cores.

Packaging material that once had to be taken out of the production stream due to distorted cores can now be restored to service within minutes by one person and the Svecom-PE Reel Saver.

Safety is very important and this product must be used by trained technicians.

- Avoid production delays and stock inconvenience
- Eliminate downtime and material losses

Pneumatically operated, the Reel Saver's tapered jaws are simply inserted into the damaged core. No matter how crushed or distorted, the irresistible power of the jaws returns the core to its original shape and size allowing the reel to be used on either shafted or shaftless reel stands.



FEATURES MOD. 720/PH

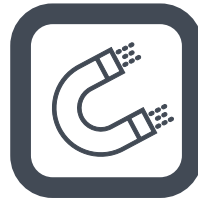
- Jaws available for 3, 4, 5 or 6 inch ID cores
- Sleeve inserts available for cores of other sizes
- Can be supplied with interchangeable jaws of different sizes
- Up to 16,000 lbs/7272 kg of thrust from 86 psi/9 bar air supply

DATA SHEET*	720/PH
INTERNAL CORE DIAMETER	70/76 mm
INTERNAL CORE DIAMETER WITH ADPTER	150/152 mm
EXPANSION	up to 76 mm
EXPANSION WITH ADAPTER	up to 152 mm
PRESSURE	min. 5 bar (6 bar recommended)

* The technical data are purely indicative. Contact Svecom - P.E. for personalized requests

PNEUMATIC EXPANDING CHUCKS WITH LEDGES

MOD. 740/PL



always maintains contact with the cores, increases productivity, easy repair



High performance, precise winding



many application possibilities and use with all kinds of cores



designed to minimize the risk of rupture



chosen from time to time based on the application; 60 years of experience



12-month warranty ensures the quality of the product



The 740/PL air chuck is recommended for unwinding and rewinding with cores, where perfect centering is needed.

The chuck body is available in steel or aluminium, and the expanders in steel, rubber, plastic or in combination, depending from the application. It is available with side flange for unwind and rewind stands mounting, or with a passing bore for passing bars mounting.

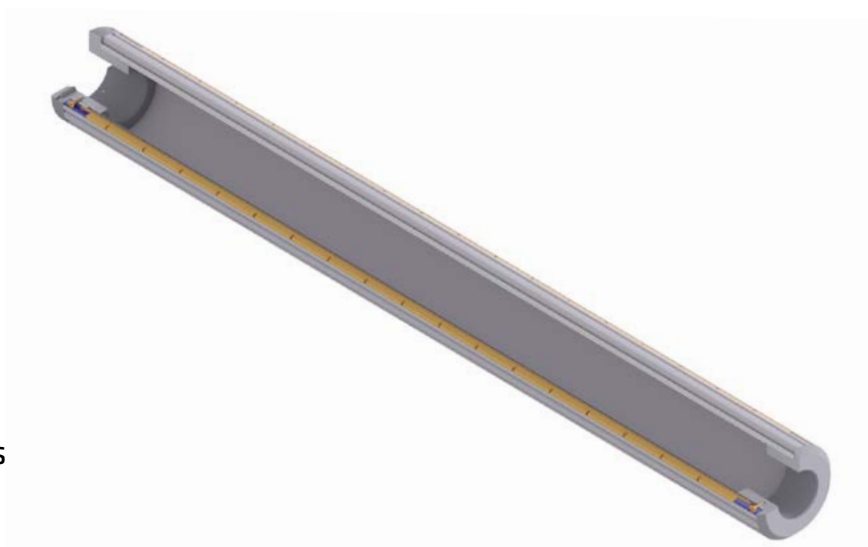
Expansion is obtained by a system of inflatable tubes that are located beneath each row of expanders.

Each tube exerts pressure equally to engage the expanders when air is applied, obtaining this way greater self-centering qualities.

To get better performances in load capacity and transmittable torque, the number of expanders can be increased or, as an option, three or more 740/PL chucks can be connected in series and fed by one inflation valve.

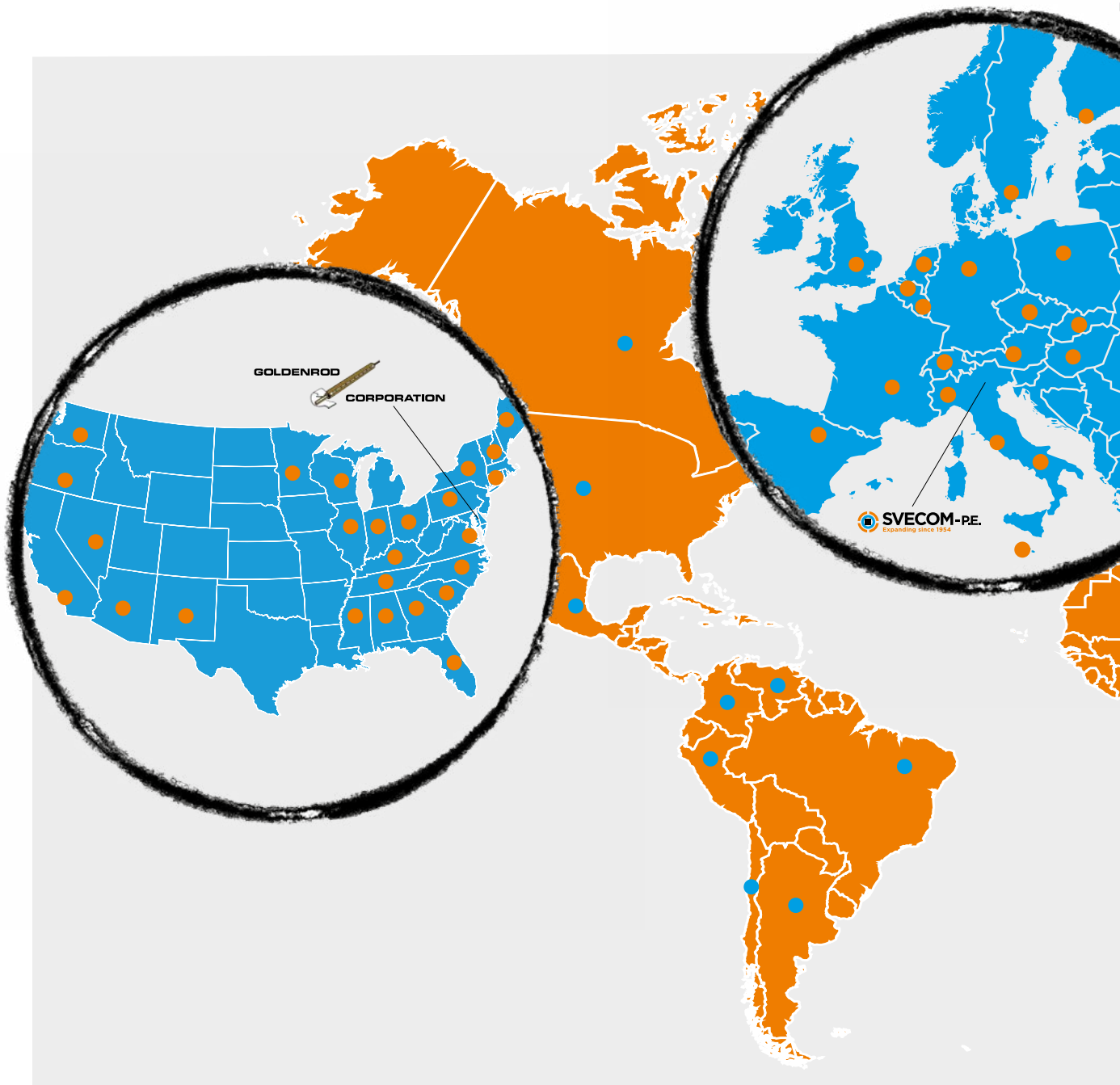
FEATURES MOD. 740/PL

- Multiple air chamber system
- High resistance rubber tubes
- Extended choices of expandable elements
- Quality components



DATA SHEET*					740/PL			
DIAMETER	from 70 to 600 mm							
CHUCK LENGTH	about 250 mm							
EXPANSION	8 mm on diameter							
WORKING PRESSURE	min. 5 bar (6 bar recommended)							
	STEEL				light alloy			
INTERNAL CORE DIAMETER IN MM	70/76	100	120	150	70/76	100	120	150
NUMBER OF LUGS ON CIRCUMFERENCE	5	6	7	9	5	6	7	9
MAX CARRYING CAPACITY PER CHUCK IN N	3000	4000	5000	7500	2000	3000	4000	6500
MAX TORQUE WITH CARDBOARD CORES IN NM/CM	6,2	9,8	14,4	22	6,2	9,8	14,4	22
MAX TORQUE WITH STEEL CORES IN NM/CM	6,7	10,6	15,7	24	6,7	10,6	15,7	24

* The technical data are purely indicative. Contact Svecom - P.E. for personalized requests



● SALES NETWORK

EUROPE

Italy
Austria
Belgium
Czech Republic
Finland
France
Germany
Greece
Netherlands
Luxemburg

Malta
Poland
Slovakia
Spain
Sweden
Switzerland
United Kingdom
Russia
Turkey

ASIA

China
India
Pakistan
Saudi Arabia
Indonesia
Iran
Israel
Lebanon
Malaysia
Taiwan

AMERICA

Argentina
Brazil
Colombia
USA
Canada
Mexico
Venezuela
Peru
Chile

AFRICA

Egypt



MAINTENANCE AND REPAIRS

EUROPE

France
United Kingdom
Czech Republic
Spain

Austria
Switzerland
Finland
Turkey

ASIA

China
Taiwan
India

AMERICA

Canada
Mexico
USA



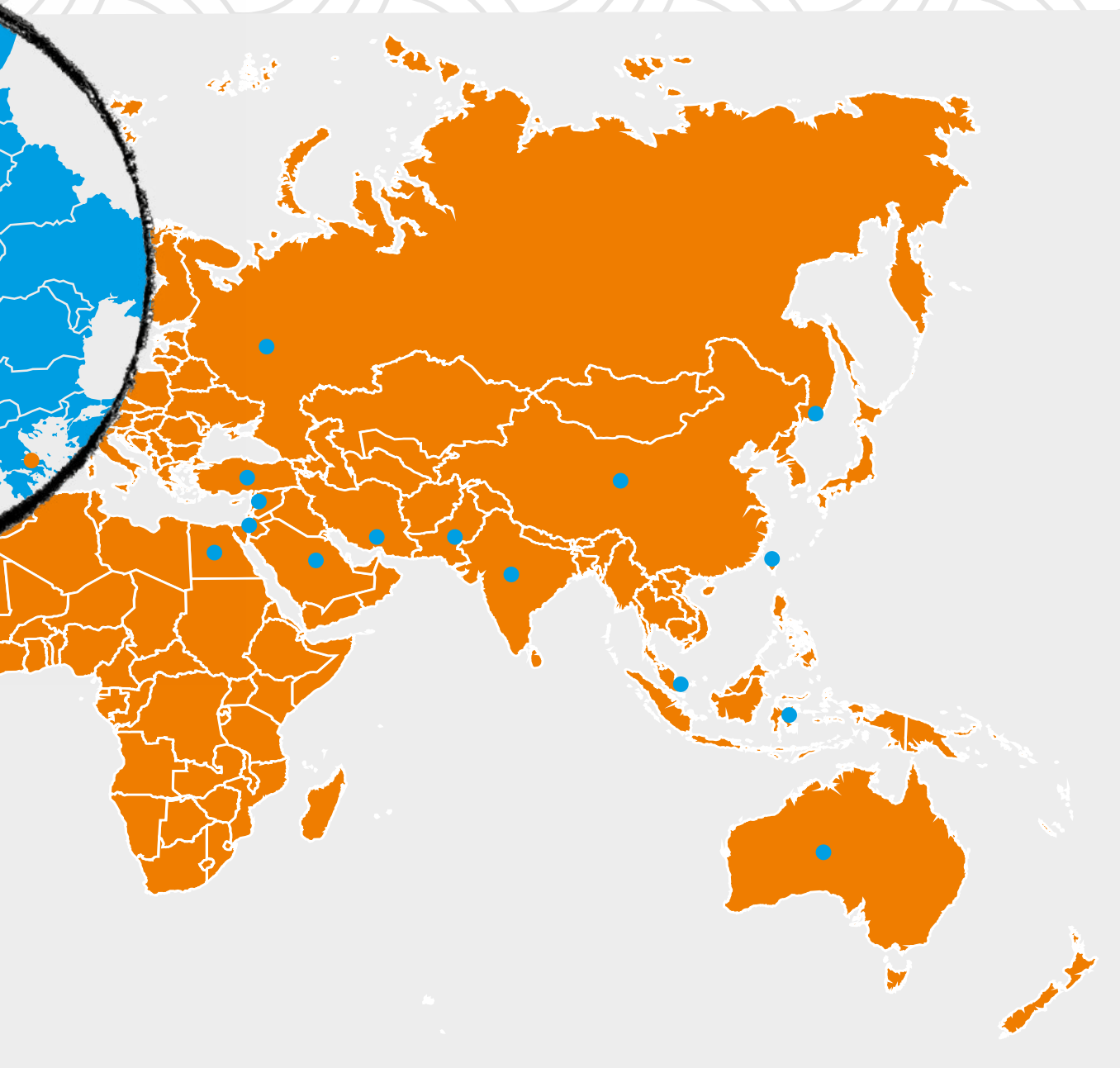
HEADQUARTERS

SVECOM P.E. SRL - 36075 Montecchio Maggiore (Vicenza) Italy - Via della Tecnica, 4
Tel: +39 0444 746211 - Fax: +39 0444 498098 - www.svecom.com - svecom@svecom.com



BRANCH USA GOLDENROD CORPORATION -25 Lancaster Dr, Beacon Falls, CT 06403, USA

SVECOM - P.E., A GLOBAL PRESENCE.



We are certified **UNI EN ISO 9001:2015** as a warranty of quality, reliability, technical experience, and attention to the needs of each individual customer. Aim of the certification: design, production, and assistance for mechanical and pneumatic expansion devices for the winding and unwinding of materials in reels. Thermal treatments.



Our cooling/heating rollers are designed, tested and built on the basis of the latest regulations and are certified according to PED 2014/68/UE and ASME.

