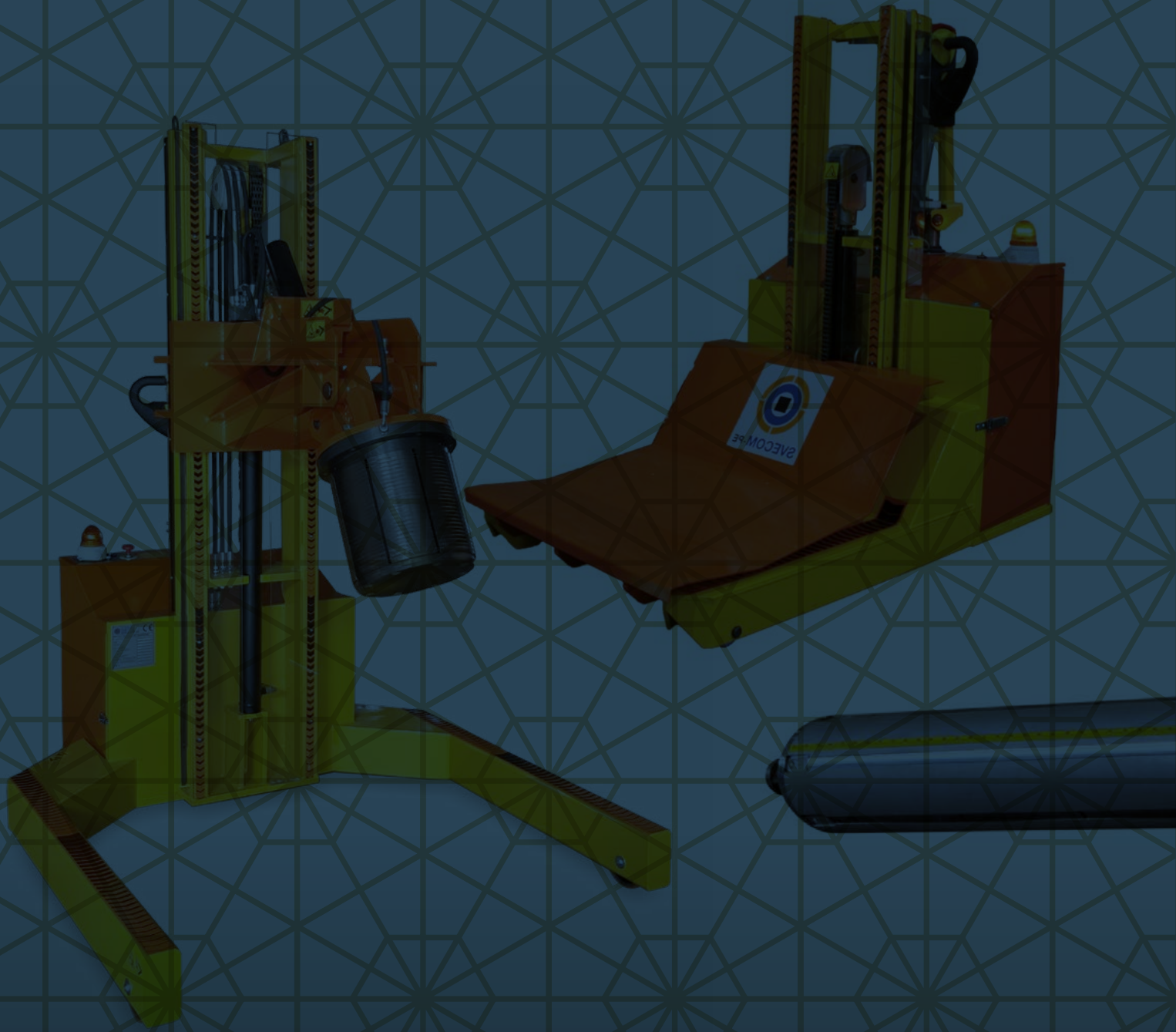


HANDLING SYSTEMS





CONSTANTLY
EXPANDING.

It is our history, since 1954.

It is the history of those who have always looked ahead with determination and courage, to create what is today one of the most important companies, worldwide, in the design and construction of expansion devices (shafts and chucks), safety chucks, handling systems (extractors, trolleys, lifting platforms) and rollers.

Vision

Winding and unwinding perfect reels with maximum efficiency.

Mission

Create user friendly, innovative and highly customizable winding and unwinding systems.

Values

Honesty and integrity
Constant work for customer satisfaction
Respect and recognition for people's value

PNEUMATIC SHAFT MANIPULATOR MOD.10 **PAG 06**

ELECTRO-HYDRAULIC REEL MANIPULATOR MOD. 300-1000/BMS **PAG 08**

MANUAL TROLLEY FOR SHAFT AND CHUCK HANDLING MOD. 401/FH **PAG 10**

ELECTRIC TROLLEY FOR SHAFT/CHUCK HANDLING **PAG 12**

MANUAL LIFTING TROLLEY MOD. 405/FH **PAG 14**

REELS LIFTING ELECTRIC TROLLEY MOD. 405/BA **PAG 16**

REELS TURNER ELECTRIC TROLLEY MOD. 410/BMS **PAG 18**

DOUBLE COLUMN SHAFT PULLER MOD. 100 **PAG 20**

SINGLE COLUMN SHAFT PULLER MOD. 200 **PAG 22**

COMPLETELY AUTOMATIC HANDLING SYSTEM MOD. 400 **PAG 24**

TILTING TABLE MOD. 700 **PAG 26**

SPECIALS

SINGLE AND DOUBLE REEL UNWINDER **PAG 32**

MIXER BICOMP **PAG 34**

PNEUMATIC SHAFT MANIPULATOR

MOD. 10



rapid movement and rotation of shaft with the least effort



easy to install



certificate



robustness and reliability



made in Svecom



SHAFT EXTRACTION FROM REEL AND NEW CORE INSERTION



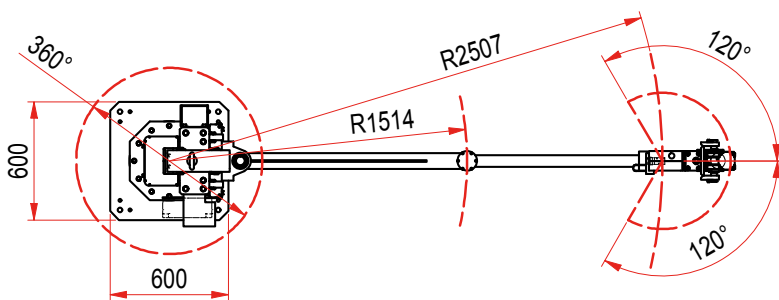
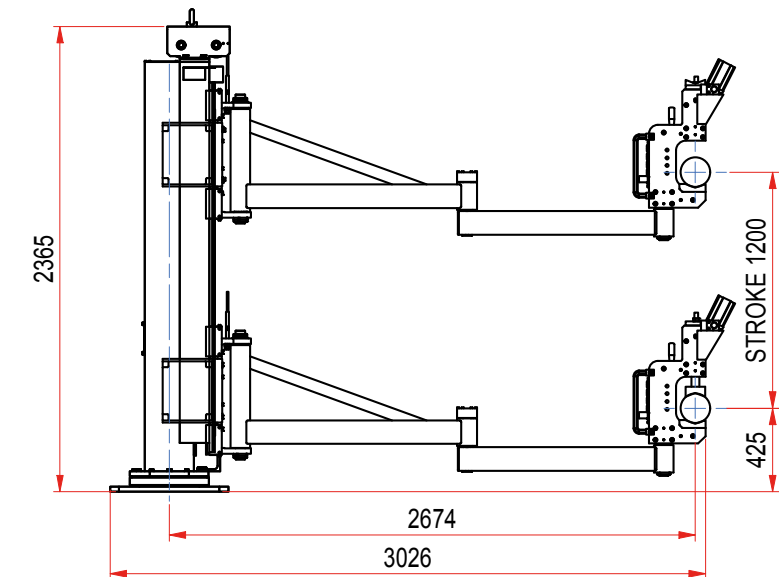
SHAFT HANDLING AND MACHINE CLAMPING



The manipulator is a pneumatic machine designed specifically to insert and extract the shafts into the machine.

It can insert and extract expanding shafts from spools and store them without any operator effort.

The machine is floor-mounted (fixed position), connected up to the compressed air supply. It moves to the shaft-grip position along a horizontal axis, with vertical traverse and manual rotation around the column.



FEATURES MOD. 10

- Fully pneumatic
- Adjustable according to the load
- Combined with a trolley, a complete system is obtained.

DATA SHEET*	MOD. 10
SHAFT CLAMP	min ø 30 to ø 200 mm
CARRYING CAPACITY	100 kg,
WORK PRESSURE	6 bar
MACHINE WEIGHT	about 750 kg

*The technical data are purely indicative. Contact Svecom - P.E. for customized requests

PNEUMATIC REEL MANIPULATOR

MOD. 300-1000/BMS



rapid movement and
rotation of shaft with the
least effort



easy to install



robustness and reliability



made in Svecom



certificate

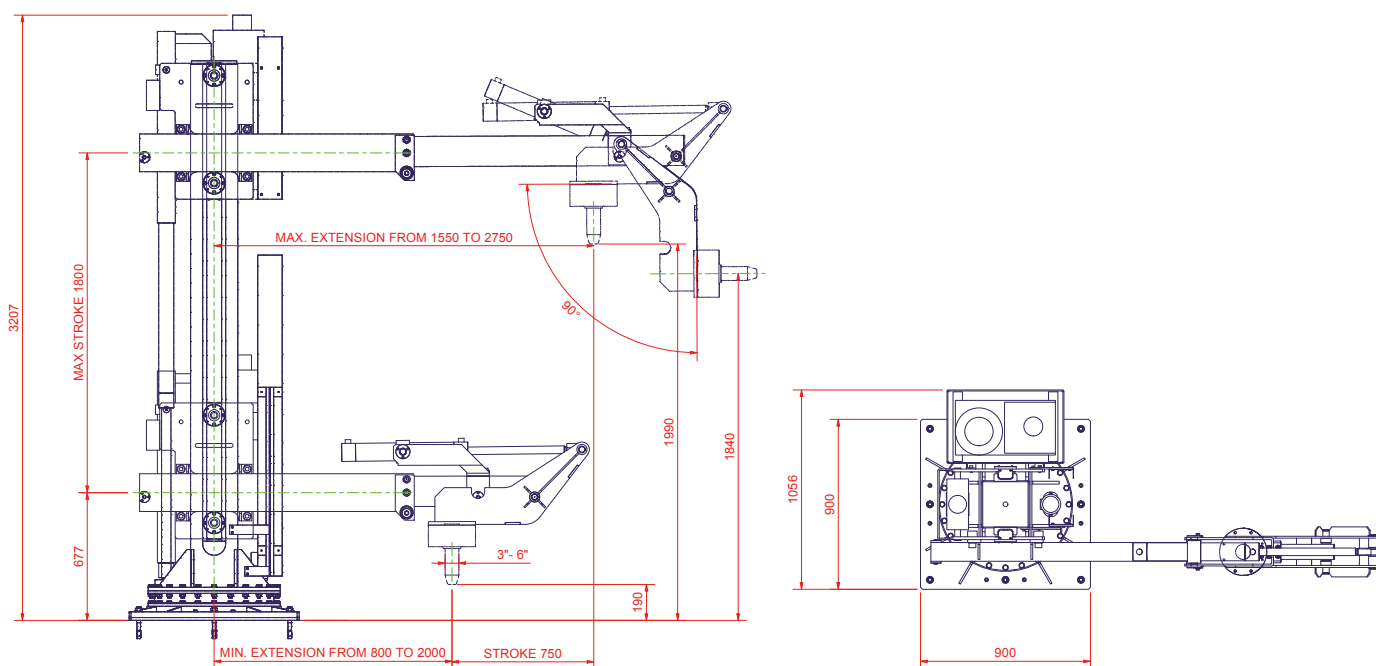


The reel manipulator has been designed in order to simplify the handling of reels.

300-1000 BMS is an electro-hydraulic machine designed to solve problems of reels' handling of different sizes and materials. It can load, palletize, store, move reels in a wide mass field; it is particularly suitable for papers that are

difficult to handle.

It can be installed on the floor (fixed position) or on rail trolleys, connected to the power line and to hydraulic line (for movement of the gripping chuck). It can clamp the reel both on vertical and horizontal axis, with horizontal/vertical translation and rotation around the column.



MOD. 300-1000/BMS

- Electro-hydraulic
- The longer the arm is, the smaller the payload will be

DATA SHEET*	MOD. 300	MOD. 1000
PAYLOAD	150 kg	600 kg
HORIZ. ARM LENGHT	from 1450 to 2550 mm	from 1550 to 2750 mm
REELS	up to ø 2500 mm	up to ø 2500 mm
STROKE	max 1870 mm	max 1870 mm

*The technical data are purely indicative. Contact Svecom - P.E. for customized requests

MANUAL TROLLEY FOR SHAFT/CHUCK HANDLING

MOD. 401/FH



rapid movement and
rotation of shaft with the
least effort



easy to install



robustness and reliability



made in Svecom



certificate



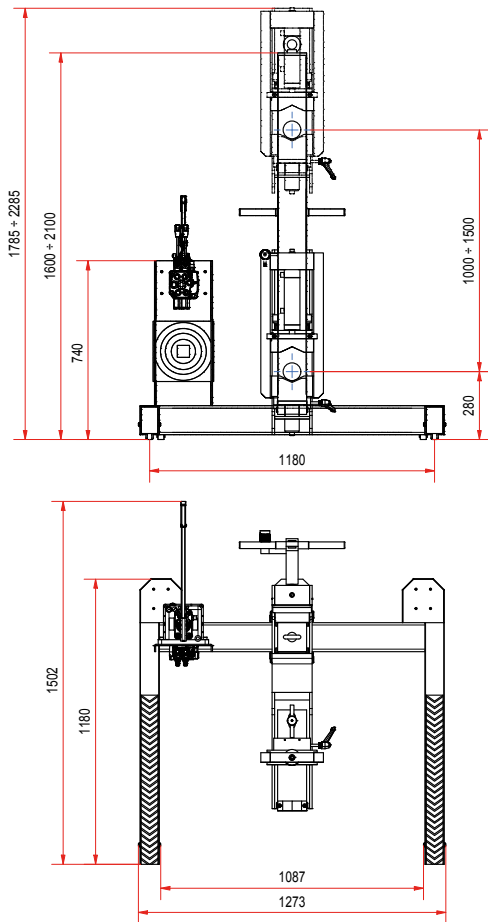
The manual trolley has been created to simplify the handling of shafts and chucks.

It consists of a base frame mounted on wheels, a manual pump and an active piston between two guides that direct the load vertically. The shaft, once fixed in the appropriate clamp device, can be moved manually or hydraulically. The vehicle is mechanical

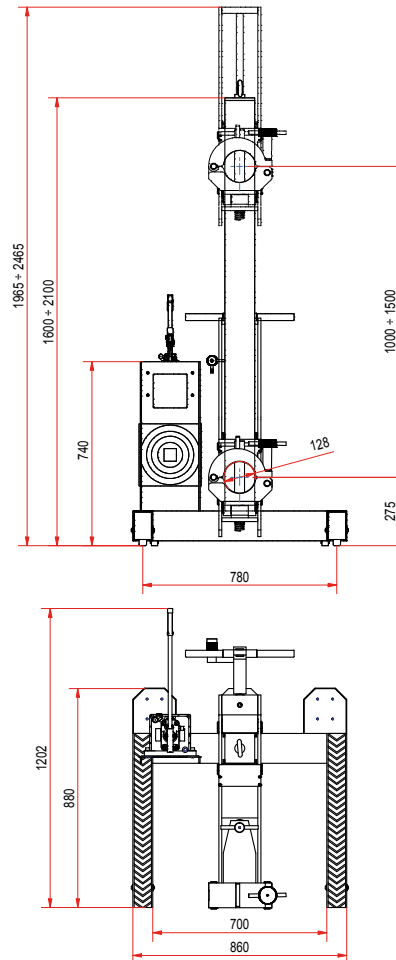
and is moved upwards via a manual hydraulic pump; instead it moves downwards thanks to a self-locking manual release valve.

OPTIONAL

- A lightweight model is available



Specific for shaft handling



Specific for chuck handling

FEATURES MOD. 401/FH

- Hydraulic/manual clamp
- Manual movement on wheels
- Shaft/chuck extraction

DATA SHEET*	MOD. 401/FH
TROLLEY WEIGHT	250 kg
PAYLOAD	150 kg
EXTRACTION HEIGHT	1200 mm
STROKE	from 1000 to 1500 mm

*The technical data are purely indicative. Contact Svecom - P.E. for customized requests

ELECTRIC TROLLEY FOR SHAFT/CHUCK HANDLING

MOD. 401/BA



rapid movement and
rotation of shaft with the
least effort



long life battery



robustness and reliability



made in Svecom



certificate



The electric trolley has been designed for

- the extraction and handling of expanding shafts and chucks from a reel of wound material;
- their own insertion in cores that were properly arranged by the operator.

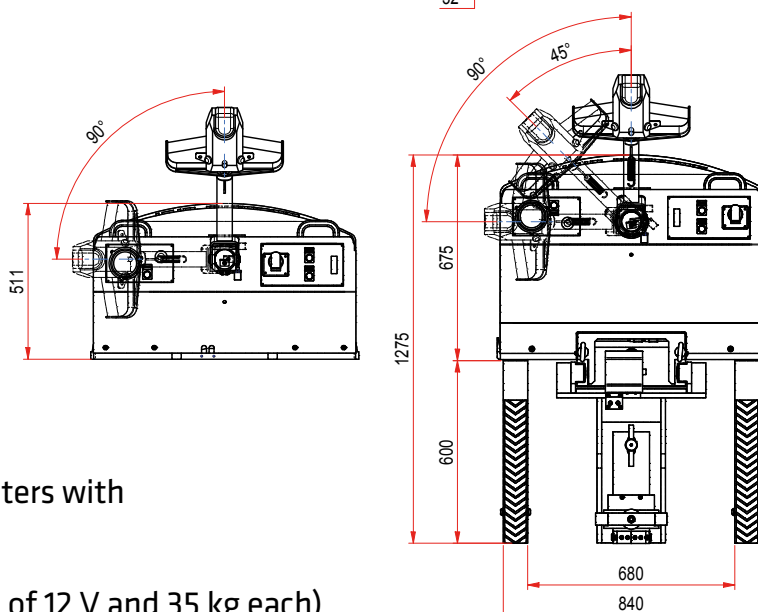
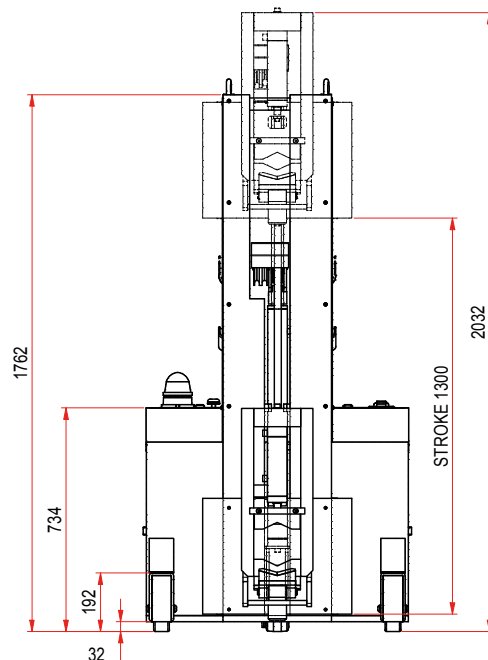
It consists of a base frame mounted on wheels, a pump and an active piston between two guides that direct the load vertically. Once grabbed with the appropriate clamp, the shaft can be moved through the hydraulically operated group. The vehicle is electrically powered through a high capacity battery.

OPTIONAL

- Gel batteries
- Camera
- Right-left clamp movement
- Additional battery pack with quick extraction
- On the long model 90° steering
- Lightweight model available

FEATURES MOD. 401/BA

- Handling of shafts with different diameters with the same trolley
- Interchangeable batteries
- 24 V operation (short model: 2 batteries of 12 V and 35 kg each) (long model: 4 batteries of 6 V high capacity and 45 kg each)
- Electric motor wheel
- Multiple hydraulic movements according to the needs (lifting, shaft gripping, lateral translation for centering, first extraction, etc.)
- Steering: short model 90° - long model 45°



DATA SHEET*	MOD. 401/BA
DIAMETERS MEASUREMENT	from 50 up to 160 mm
CARRYING CAPACITY	300 kg mm (depending on the exposed length of the load)
VELOCITY	2,5 Km/h (reduced with high loads)
EXTRACTION HEIGHT	from 250 up to 2000 mm
TROLLEY WEIGHT	about 700 kg

*The technical data are purely indicative. Contact Svecom - P.E. for customized requests

MANUAL LIFTING TROLLEY

MOD. 405/FH



rapid movement and
rotation of shaft with the
least effort



easy to install



robustness and reliability



made in Svecom



certificate

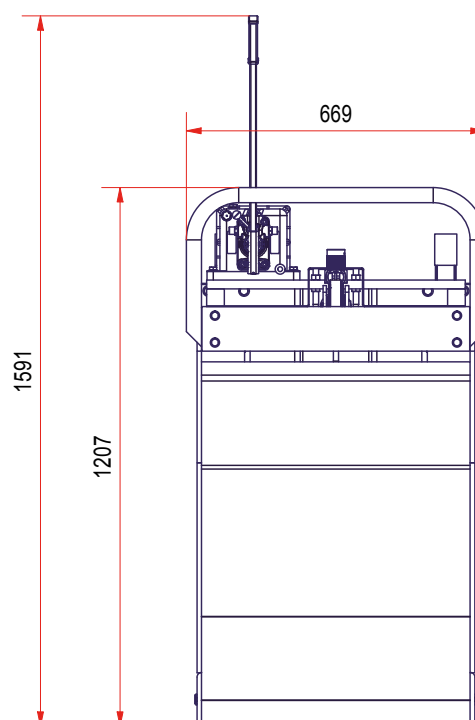
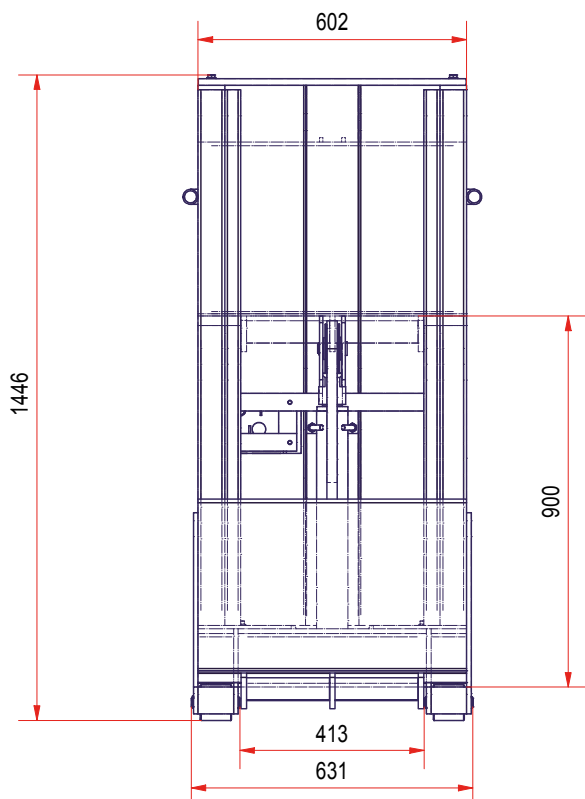


The manual lifting trolley has been designed to simplify the handling of reel.

In addition to the peculiar qualities of remarkable reliability and small footprint, it has necessary the characteristics to meet the relative needs of reels handling, of loading/unloading presses, laminators, flexographic, and cutters.

OPTIONAL

- A lightweight model is available
- Electrical up/down through battery
- Anti-overturning system



FEATURES MOD. 405/FH

- Small footprint
- Completely manual

DATA SHEET*		MOD. 405/FH
PAYLOAD	600 Kg	
TROLLEY WEIGHT	250 kg	
VERTICAL LIFTING STROKE	from 800 up to 1200 mm	

*The technical data are purely indicative. Contact Svecom - P.E. for customized requests

REEL LIFTING ELECTRIC TROLLEY

MOD. 405/BA



rapid movement and
rotation of shaft with the
least effort



reduced turning
radius



robustness and reliability



made in Svecom



certificate



The electric trolley has been designed for the handling of reels.

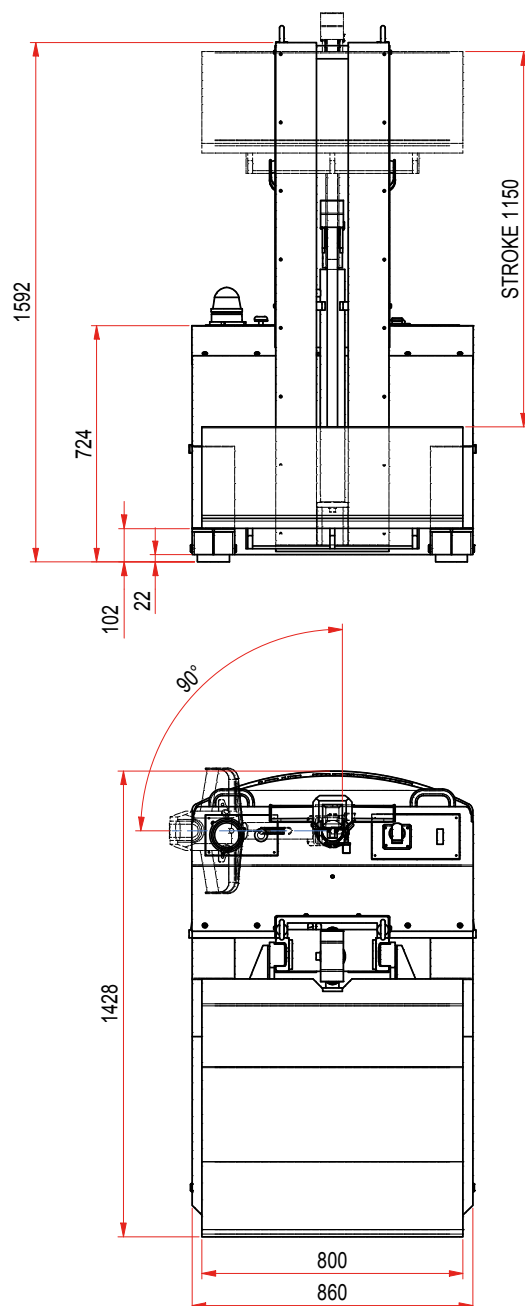
The trolley is manufactured in compliance with the strictest accident prevention standards and maintains an excellent level of efficiency even under intense work regimes. It consists of a base frame mounted on wheels, a electric pump and an active piston between two guides that direct the load vertically. Once grabbed with the appropriate clamp, the shaft can be moved through the hydraulically operated group. The vehicle is electrically powered through a high capacity battery.

OPTIONAL

- Gel batteries
- Additional battery pack with quick extraction
- Load cells with indication of the reel weight
- Heavy-duty model available (max weight 2500 Kg)
- Light model available (max weight 800 Kg)

FEATURES MOD. 405/BA

- Interchangeable batteries
- Electric motor wheel, hydraulic unit for lifting
- 24 V operation (2 batteries of 12 V and 35 kg each)



DATA SHEET*		MOD. 405/BA
REELS	up to Ø 2000 mm	
CARRYING CAPACITY	1600 kg	
VELOCITY	2,5 Km/h (reduced with high loads)	
HIGH	from 135 to 1500 mm (relation to the weight to be lifted)	
WEIGHT	about 700 kg	

*The technical data are purely indicative. Contact Svecom - P.E. for customized requests

REEL TURNER ELECTRIC TROLLEY

MOD. 410/BMS



rapid movement and
rotation of shaft with the
least effort



long life battery



robustness and reliability



made in Svecom



certificate



The reels turner trolley has been designed for raising and handling of wound reels.

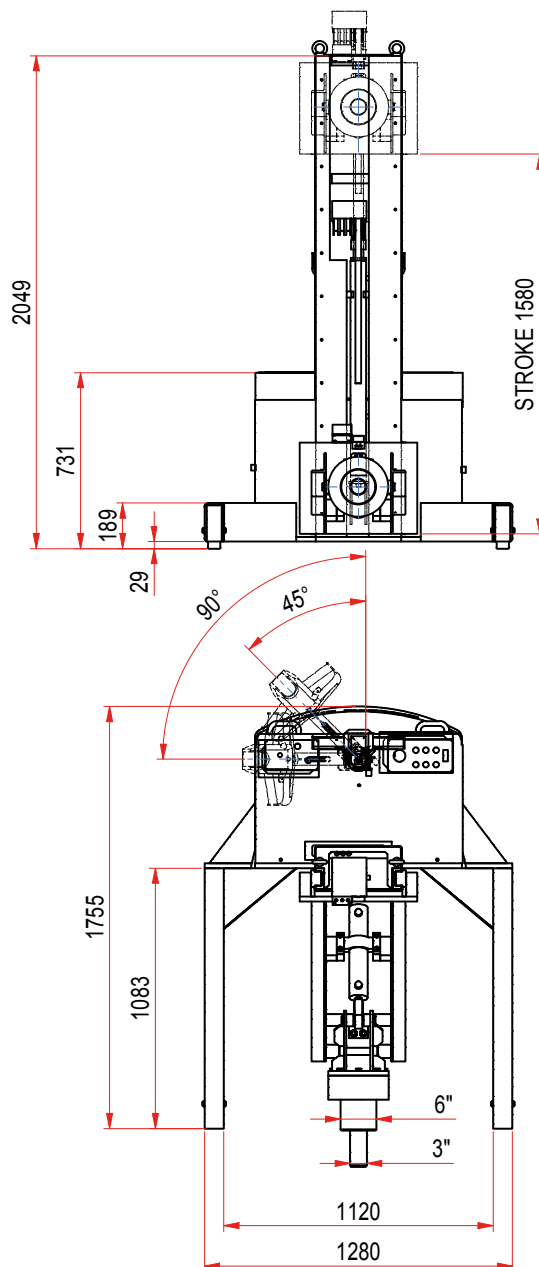
The unit consists of a basic frame on wheels, an electric pump, a piston translating in a vertical mechanical arm mounted on two vertical slides and one piston for the reel rotation. The vehicle moves electrically through four large capacity batteries.

OPTIONAL

- Gel batteries
- Right-left clamp movement
- Horizontal translation
- Additional battery pack with quick extraction
- Anti-stripping system
- Double head for gripping 3 "or 6" coils
- 90° stroke

**FEATURES
MOD. 410/BMS**

- Interchangeable batteries
- 24 V operation (2 batteries of 12 V and 35 kg each)
- Hydraulic movements
- 45° stroke



DATA SHEET*		MOD. 410/BMS
REELS		up to Ø 1500 mm
CLAMP		from 3" to 6"
VELOCITY		2,5 Km/h (reduced with high loads)
HIGH		from 260 to 2060 mm (related to the weight to be lifted)
WEIGHT		Ø 3" => 800 Kg ; Ø 6" => 1500 Kg

*The technical data are purely indicative. Contact Svecom - P.E. for customized requests

DOUBLE COLUMN SHAFT PULLER

MOD. 100



easy to install



reduced maintenance



robustness and reliability



made in Svecom



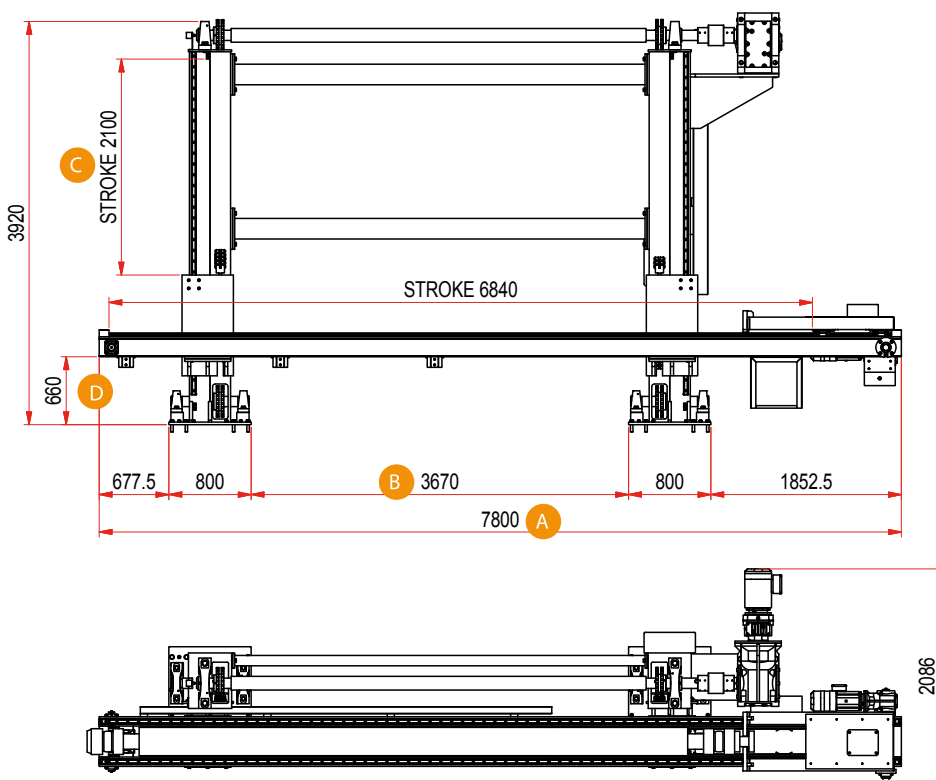
certificate



The mod. 100 – double column shaft puller has been designed for the picking and removal of the expanding shafts from inside a reel of wrapped material.

The handling system consists of a twin-column structure that rests on a base plate anchored to the floor and of a horizontal sliding surface bearing a mechanism for the coupling.

The motive power is provided by an electric motor and each function of the machine depends on the others by means of micro-switches and all the various operations are controlled by a control panel. The movement of the shaft picking unit is entirely electromechanical.



A/B: designed by shaft dimensions

C/D: designed by reel's diameter dimensions and zero axial

FEATURES MOD. 100

- Fully electric
- External control pulpit with possibility of automatic and manual cycle
- Can be combined with a folding platform
- Automatic inflation / deflation option

DATA SHEET*	MOD. 100
MAX SHAFT LENGTH	7300 mm
STROKE	from 400 up to 2400 mm
CARRYING CAPACITY	2000 kg

*The technical data are purely indicative. Contact Svecom - P.E. for customized requests

SINGLE COLUMN SHAFT PULLER

MOD. 200



Easy to use



lateral clamp, reduced
installing space



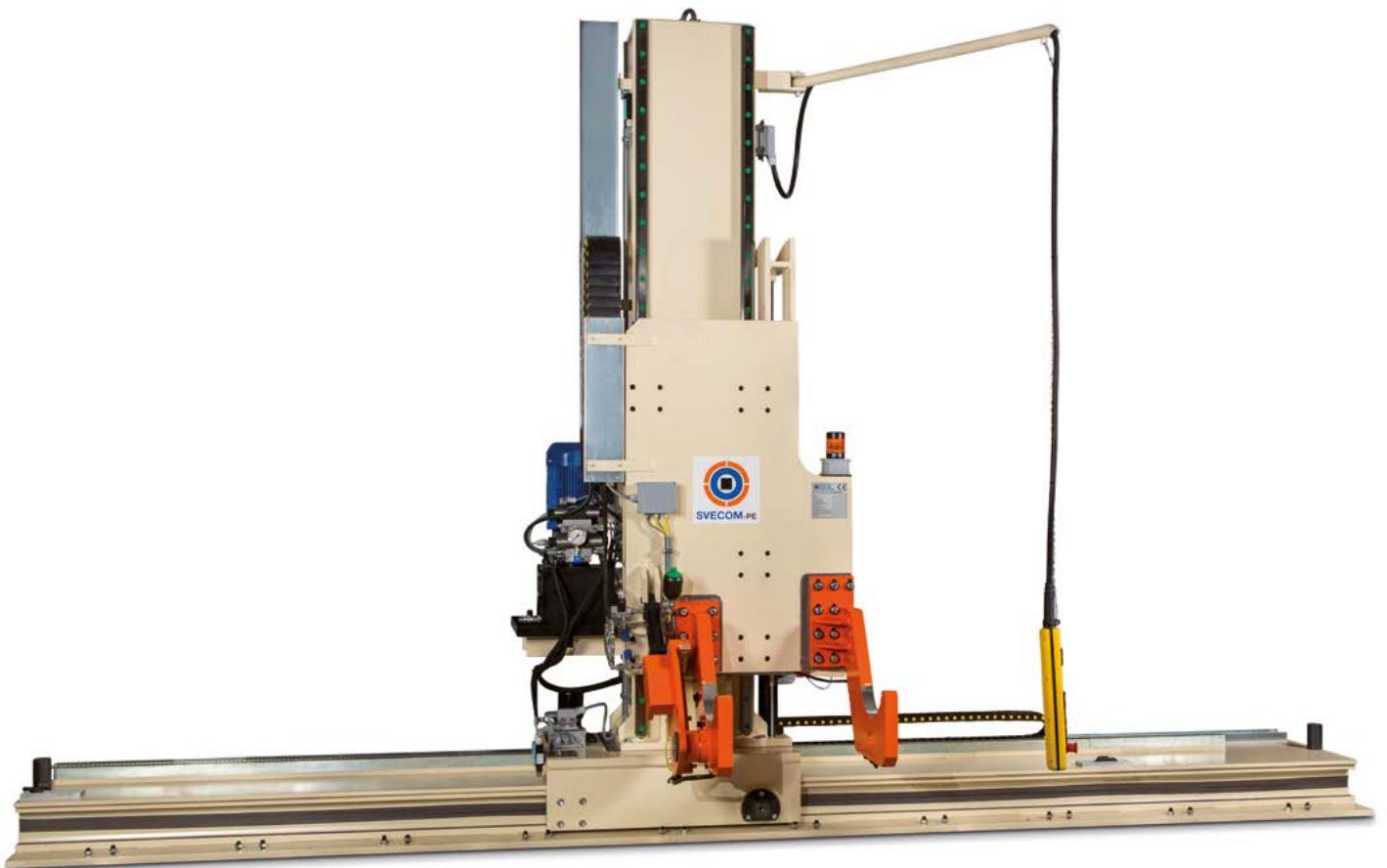
robustness and reliability



made in Svecom



certificate



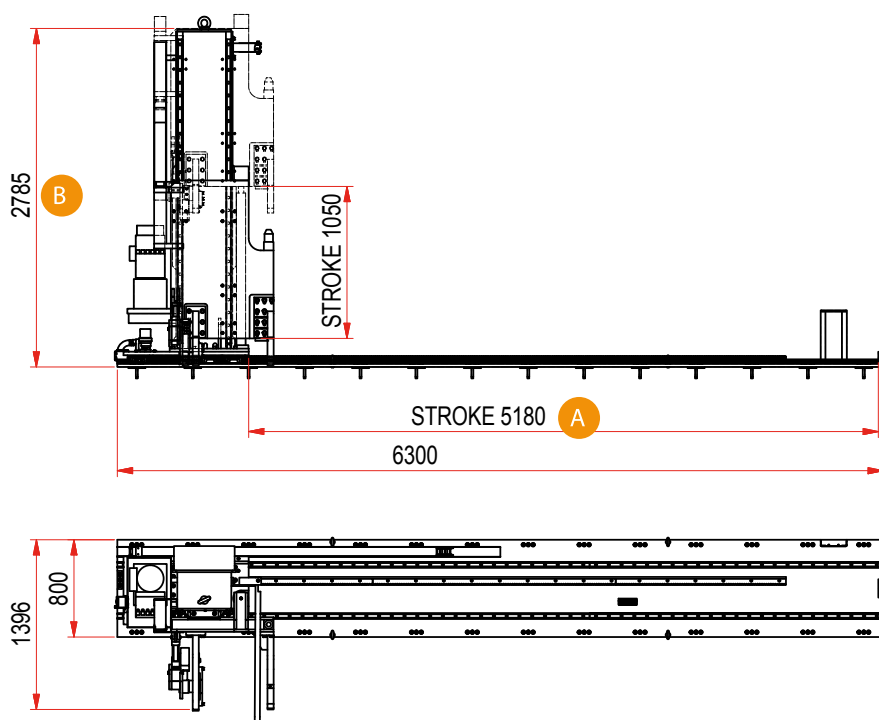
The machine has been designed for extracting expanding shafts from a reel of wound material and for re-inserting it into the cardboard cores suitably prepared by the operator.

It consists of a base provided with longitudinal guides and a rack on which a trolley runs driven by a hydraulic motor. On this a vertical tower is installed, on which an additional trolley slide on linear guides. This second trolley is supplied with an equipment which, by blocking the end of the shaft by means of a hydraulic jack controlled by a control unit, is able to lift the expandable shaft to a certain height by

following the guides of the tower. The command of the various operations takes place via push-button panel.

OPTIONAL

- PLC
- Basement driveway
- Command pulpit
- Semi-automatic extraction (designed by security area)



A/B: designed by shaft dimensions

FEATURES MOD. 200

- Manual extraction via push-button panel

DATA SHEET*	MOD. 200
MAX SHAFT WEIGHT	1800 Kg
MAX SHAFT LENGTH	6000 mm
EXTRACTION HEIGHT	from 260 up to 1600 mm

*The technical data are purely indicative. Contact Svecom - P.E. for customized requests

COMPLETELY AUTOMATIC HANDLING SYSTEM

MOD. 400



works h24



automatic Cicle



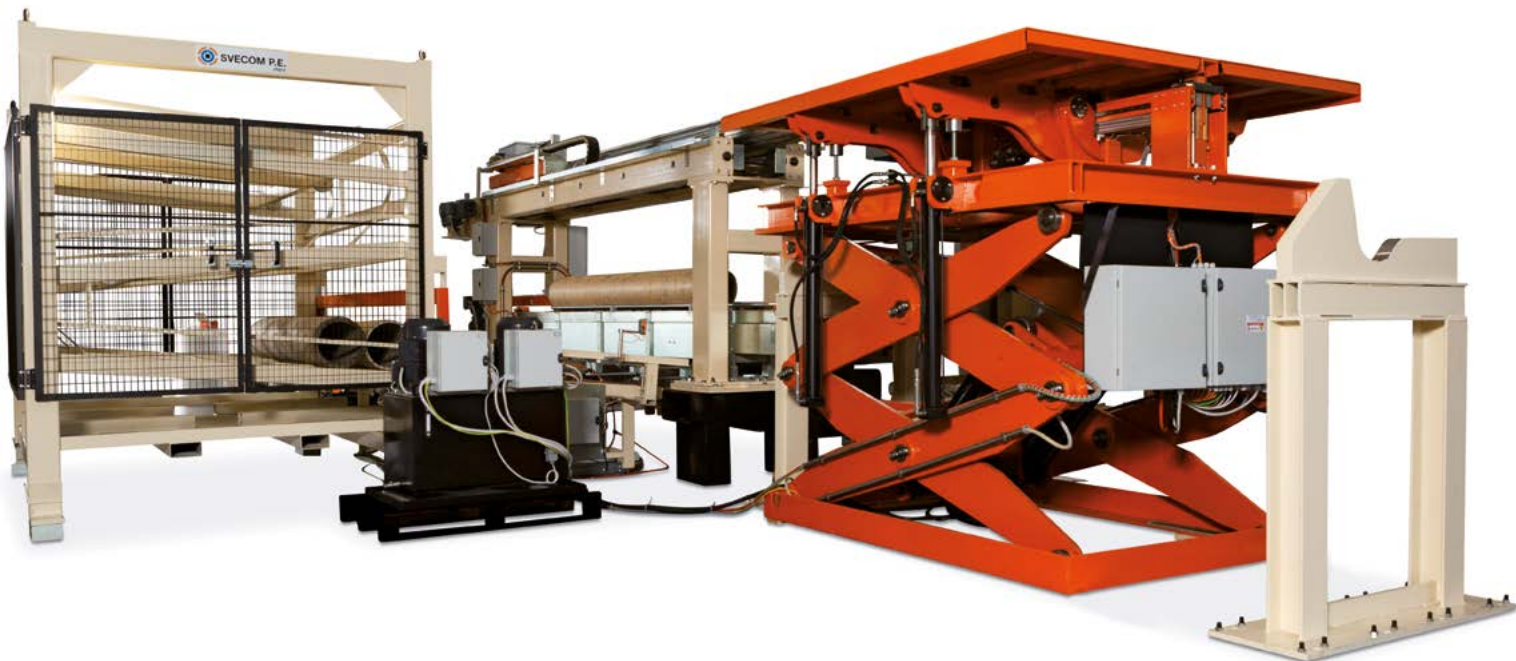
robustness and reliability



made in Svecom



certificate



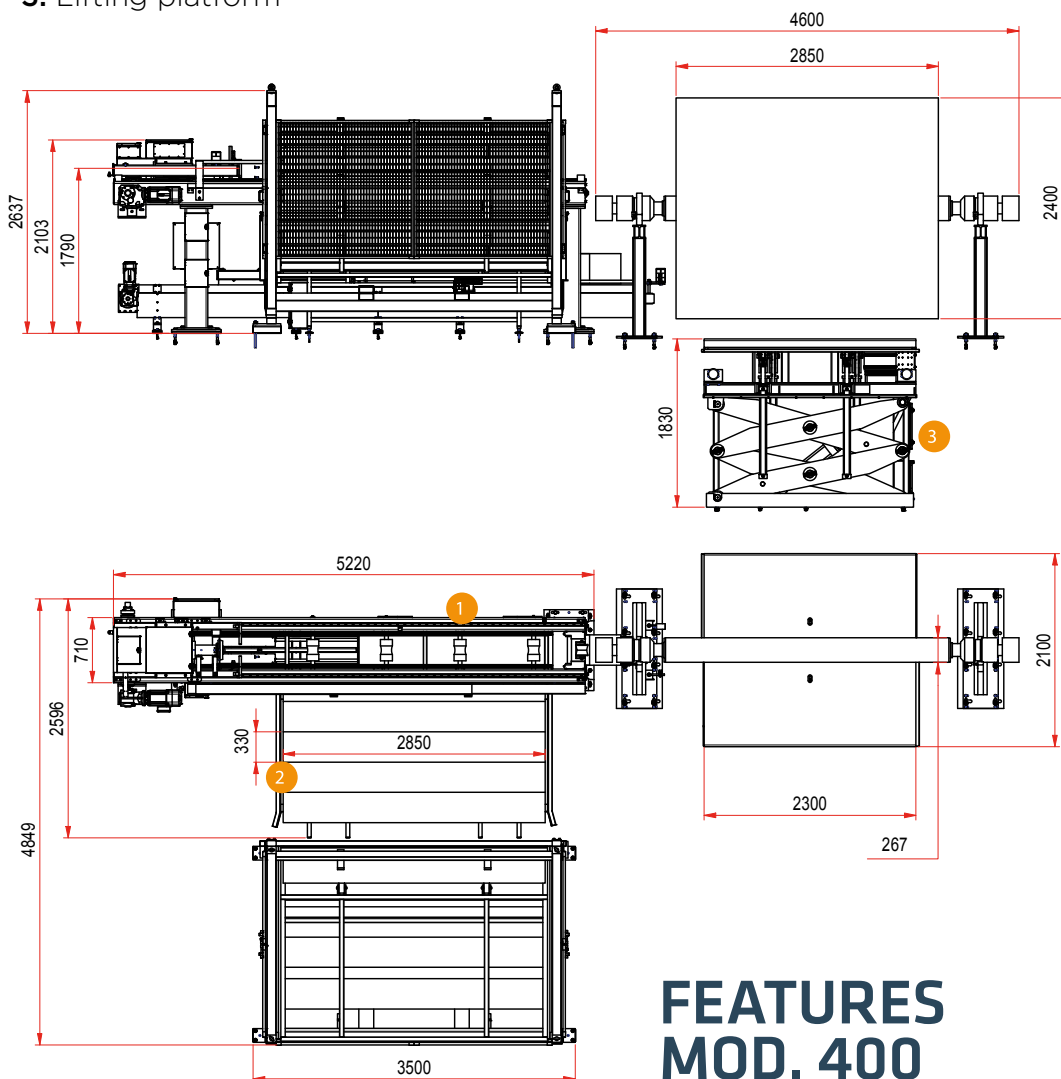
The complete electro-hydraulic system with automatic movement has been realized for the extraction of expandable shafts from a coil of wrapped material and the reinsertion of the same in the new cores.

OPTIONAL

- Core Basket to store the cores
- Different optional based on the project

It consists of three main elements:

1. Shaft extractor - cores inserter (for inflation/deflation and insertion/extraction of shafts from reels/cores)
2. Cores warehouse (for deposit the cores into the inserter)
3. Lifting platform



FEATURES MOD. 400

- Cycle time: 8/9 min.
- Reel format: 1 or 2 reels
- Automatic inflation / deflation option

DATA SHEET*

MOD. 400

ENTIRELY CUSTOMIZED

*The technical data are purely indicative. Contact Svecom - P.E. for customized requests

TILTING TABLE

MOD. 700



easy to install



reduced maintenance



robustness and reliability



made in Svecom



certificate



The handling system mod. 700 is a modern solution for any tilting requirement.

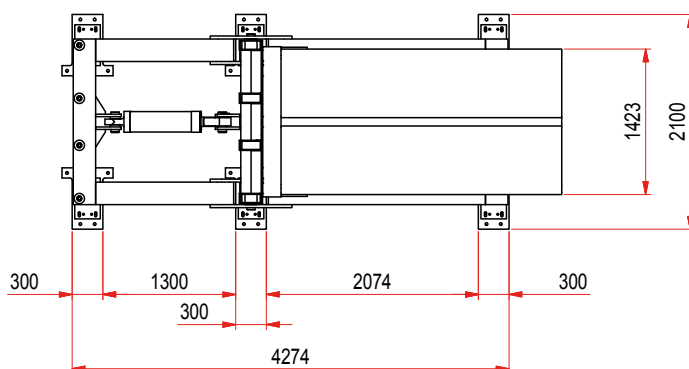
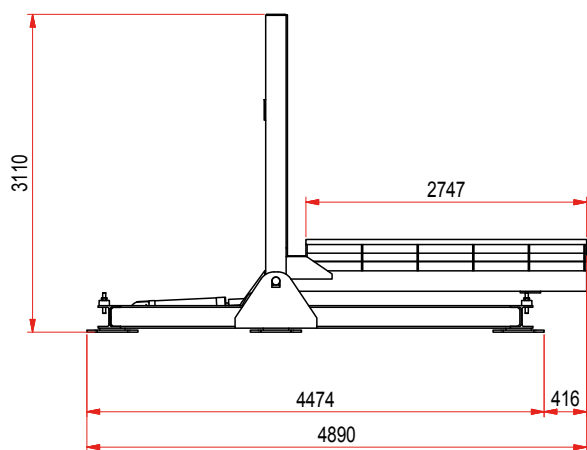
The tilting platform allows a 90° reels overturning and is composed of two sides with a V saddle for centering.

It offers longevity, strength and production quality, thus providing easy handling.

It also avoids bumps and sliding of the reel during the overturning process.

The movement is electro-hydraulic and is obtained by an hydraulic cylinder.

The handling system is built in compliance with the strictest accident prevention regulations and maintains excellent efficiency even in the longest usage. The movements are operated by means of a control panel positioned beside the machine.



FEATURES MOD. 700

- 90° reel overturning
- electro-hydraulic movement
- expanding roller/reels insertion

DATA SHEET*	MOD. 400
MAX REEL WEIGHT	5000 Kg
MAX REEL DIAMETER	3000 mm

*The technical data are purely indicative. Contact Svecom - P.E. for customized requests

HYDRAULIC LIFT

MOD. 800



easy to install



reduced maintenance



robustness and reliability



made in Svecom



certificate



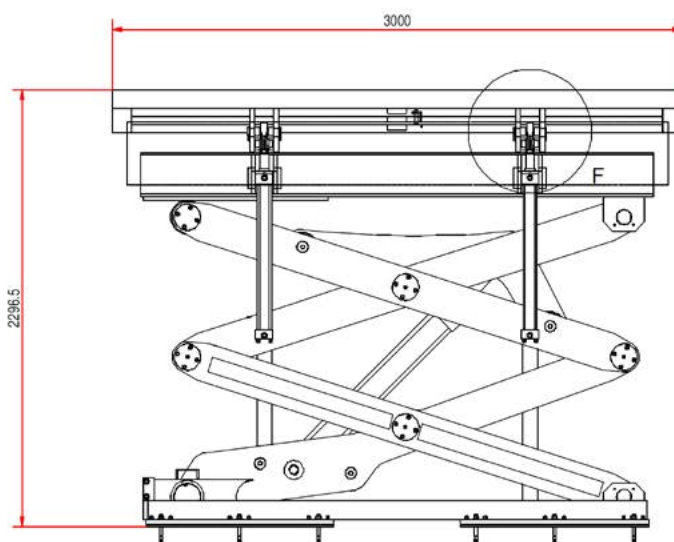
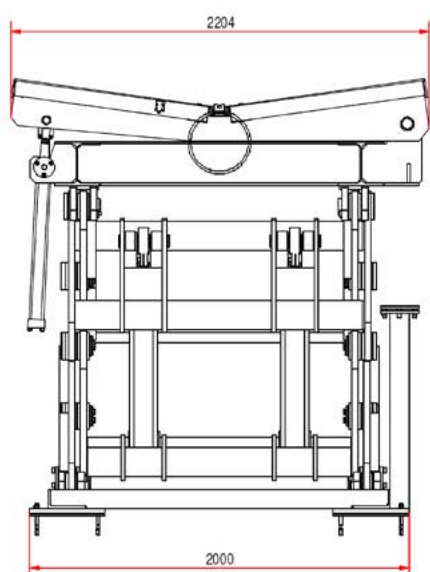
The hydraulic lift handling system mod. 800 was designed to handle cores and reels.

It consists of a lower base made with arc welded steel beams complete with plates and counterplates for fixing and leveling to the cavity surface.

A pantograph is installed on this base, on which the base for cores and coils is located.

The various positioning stations on the lifting platform (lifting, lowering, tilting, etc.) are guaranteed by electromechanical limit switches with adjustable cam intervention (mechanical adjustment).

The supply of the machine also includes a series of steel plates and related structures for the perimetral fastening of the cavity, where the lifting table will be placed.



FEATURES MOD. 800

- Heavy reel lifting
- Reel ejection
- Electro-hydraulic movement

DATA SHEET*	MOD. 800
MAX REEL WEIGHT	5000 Kg
MAX REEL DIAMETER	3000 mm

*The technical data are purely indicative. Contact Svecom - P.E. for customized requests

SINGLE AND DOUBLE REEL UNWINDER



easy to install



reduced maintenance



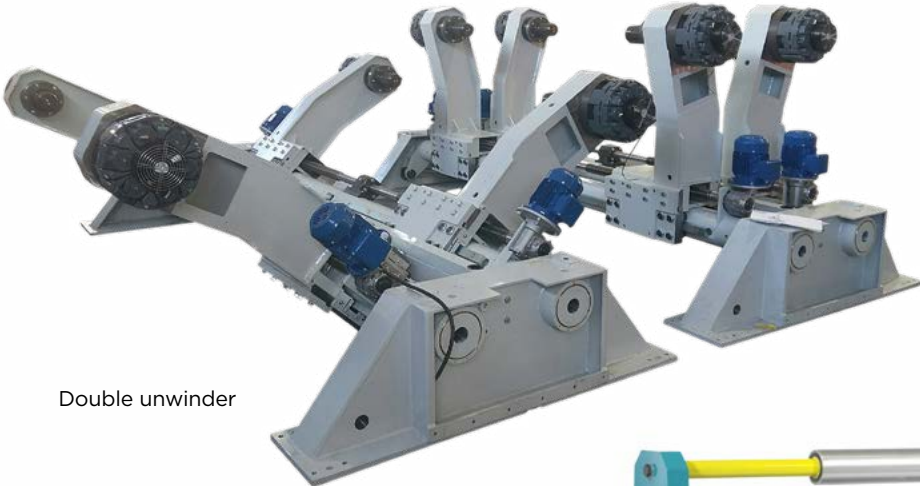
robustness and reliability



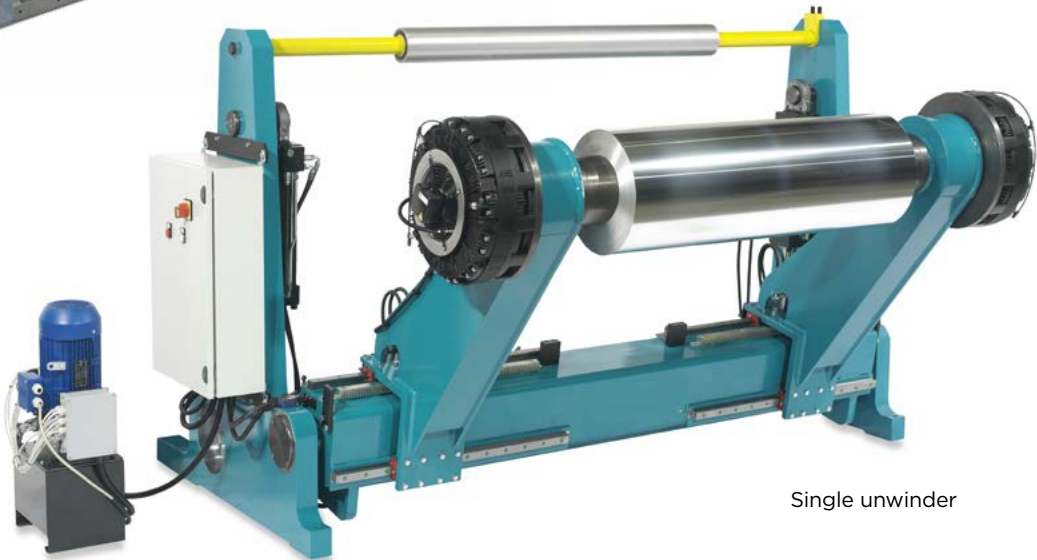
made in Svecom



certificate



Double unwinder



Single unwinder

The unwinder for reels has been designed to unwind reels of different diameters and widths, according to the required specifications.

The unwinder for reels is composed of a fixed part equipped with feet for floor fixing and one / two mobile upright (s) on which the two / four moving arms are installed which support the reel at both ends.

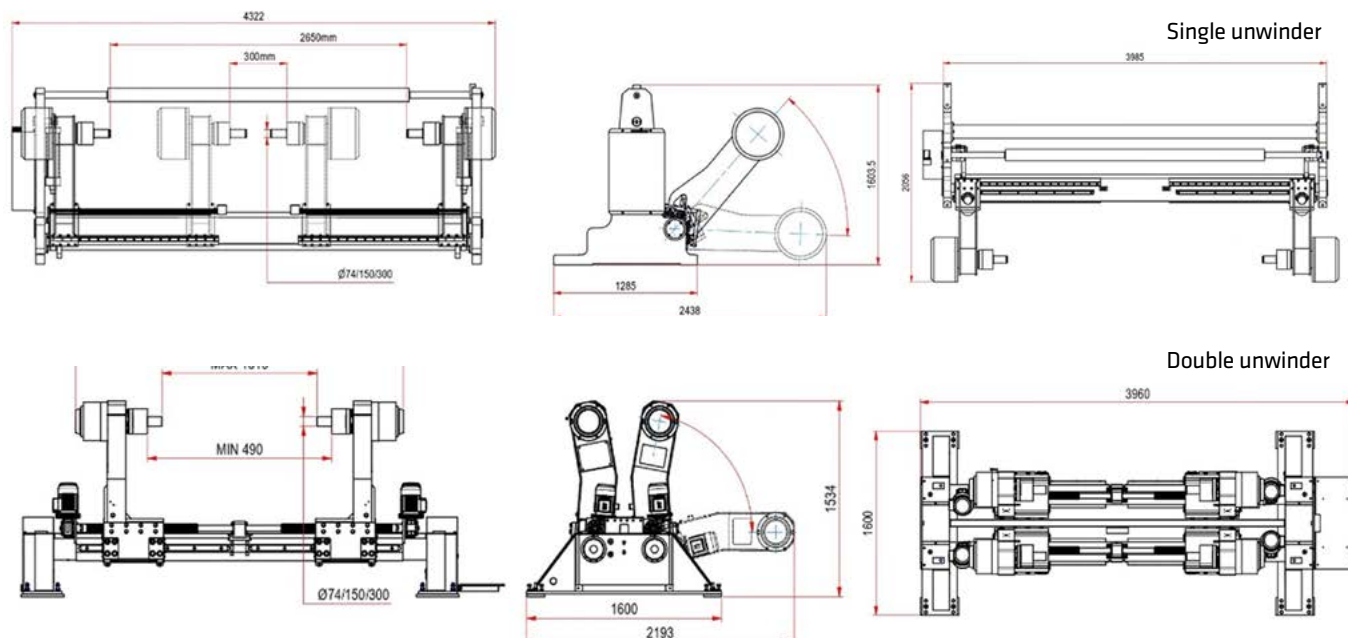
Opening and closing arms by means of hydraulic motors and rack with sliding on ball runners. The arms are independent, it is in fact possible to move them without worrying about the immediate centering of the reel. The centering itself will take place regardless of the initial position of the reel. Arms lifting by means of hydraulic pistons controlled by a hydraulic

unit positioned on the ground. Complete with expandable pneumatic chuck with leaves, adjustable return roller for better material wrapping. Pneumatic or mechanical brakes self-ventilated on both sides. Braking control is regulated by a signal from the slitting machines.

Electrical components, electrical limit switches located on the machine, electrical panel on the machine. Manual controls on remote push-button panel.

OPTIONAL

- Double base with movement on wheels that allow lateral translation of 3 100 mm continuously
- Addition of complementary rollers
- Electrical panel with push button



DATA SHEET*	
SUPPLY VOLTAGE	220/380 V - 50/60 Hz
REEL LENGTH	from 300 to 2.650 mm (single unwinder) from 490 to 1.610 mm (double unwinder)
INTERNAL CORE DIAMETER	74-150-300 mm
REEL WEIGHT	max. 3.000 Kg
REEL EXTERNAL DIAMETER	max. 2.000 mm (single unwinder) max. 1.200 mm (double unwinder)
UNWINDING SPEED	400 m/min. (single unwinder) 150 m/min. (double unwinder)

*The technical data are purely indicative. Contact Svecom - P.E. for customized requests

MIXER BICOMP



easy to install



reduced maintenance



robustness and reliability



made in Svecom



certificate



The Bicomp Mixer is characterized by flexibility and remarkable precision: the digital control of the temperatures of the components, as well as the adduction tube of the adhesive to the machine, allows precise monitoring of the job, ensuring the final quality of the solventless laminate.

The gear pumps controlled by the digital system allow to dose the two-component adhesive with a tolerance of less than 1%. In addition, there is an (optional) automatic loading system for the two components from external containers, which makes the use easier.

The mixers are equipped with Siemens hardware and software, which make them interfaceable with the laminating machines, in order to be able to transfer all the settings and the detection of the adhesive consumption data.

ADVANTAGES

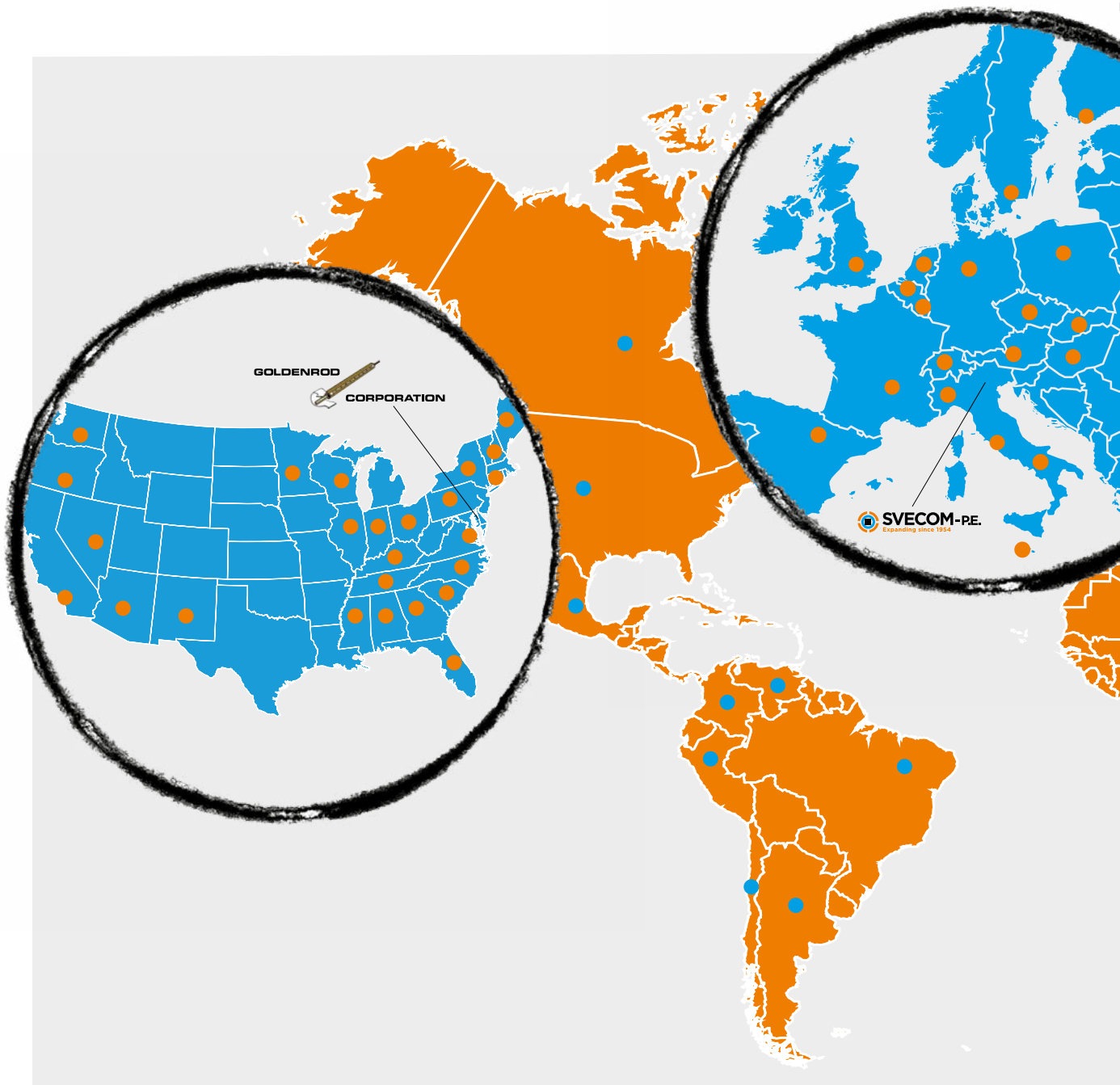
- Flexibility
- Entirely made in stainless steel
- Maximum safety for the user

OPTIONAL

- Automatic load

DATA SHEET*	
ELECTRIC SUPPLY	Three-phase 400/440 V Frequency 50/60 Hz
INSTALLED POWER (2 BARRELS)	5 kVA
PNEUMATIC SUPPLY	6 bar max. (automatic loading only)
AIR FLOW RATE	5 NI/min
SINGLE PUMP MAXIMUM FLOW RATE	1.500+1.500 cc/min
MIXING RATIO	From 1/10 to 10/1
BARREL CAPACITY WHEN HEATED	45l max.
PREHEATED BARREL TEMPERATURE	25-95 C°
PREHEATED TEMPERATURE OF THE SUPPLY MIX OF THE 2 FLEXIBLE PIPES	25-95 C°
OPERATING VISCOSITY	10-1.000.000 mPas
WIDTH	802 mm
LENGTH	1100 mm
HEIGHT	1100 mm
WEIGHT	500 Kg

*The technical data are purely indicative. Contact Svecom - P.E. for customized requests



● SALES NETWORK

EUROPE

Italy
Austria
Belgium
Czech Republic
Finland
France
Germany
Greece
Netherlands
Luxemburg

Malta
Poland
Slovakia
Spain
Sweden
Switzerland
United Kingdom
Russia
Turkey

ASIA

China
India
Pakistan
Saudi Arabia
Indonesia
Iran
Israel
Lebanon
Malaysia
Taiwan

AMERICA

Argentina
Brazil
Colombia
USA
Canada
Mexico
Venezuela
Peru
Chile

AFRICA
Egypt



MAINTENANCE AND REPAIRS

EUROPE

France
United Kingdom
Czech Republic
Spain

Austria
Switzerland
Finland
Turkey

ASIA

China
Taiwan
India

AMERICA

Canada
Mexico
USA



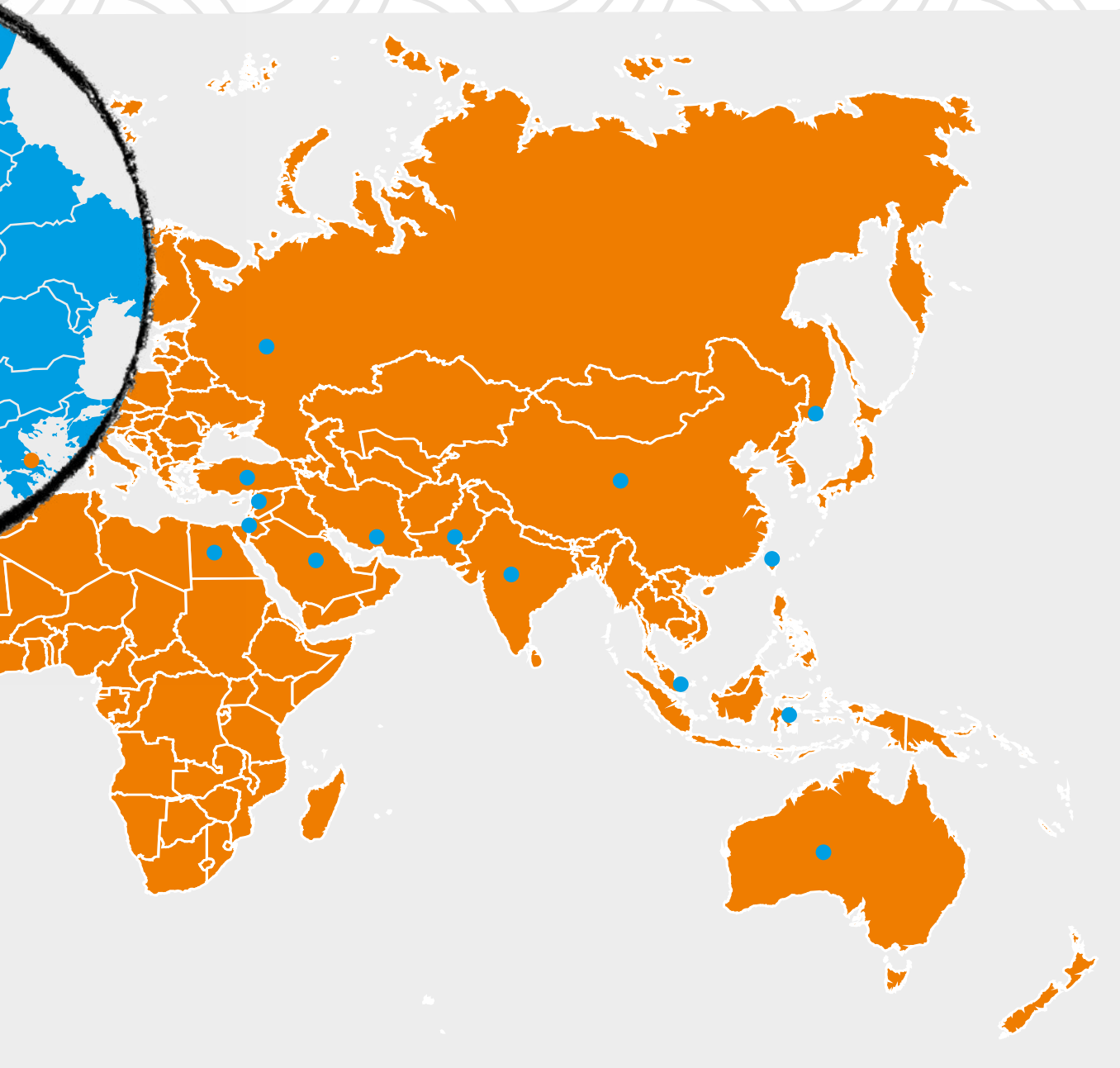
HEADQUARTERS

SVECOM P.E. SRL - 36075 Montecchio Maggiore (Vicenza) Italy - Via della Tecnica, 4
Tel: +39 0444 746211 - Fax: +39 0444 498098 - www.svecom.com - svecom@svecom.com



BRANCH USA GOLDENROD CORPORATION -25 Lancaster Dr, Beacon Falls, CT 06403, USA

SVECOM - P.E., A GLOBAL PRESENCE.



We are certified **UNI EN ISO 9001:2015** as a warranty of quality, reliability, technical experience, and attention to the needs of each individual customer. Aim of the certification: design, production, and assistance for mechanical and pneumatic expansion devices for the winding and unwinding of materials in reels. Thermal treatments.



Our cooling/heating rollers are designed, tested and built on the basis of the latest regulations and are certified according to PED 2014/68/UE and ASME.

